

The Geothory of Growing Earth: My Viewpoint of Cosmic Core Kernel Transformation

Vedat Shehu

1. MY INVOLVEMENT IN GROWING EARTH THEORY

I am obliged to point out that, like all the other geologists of my generation, I had never heard a word about Earth Expansion/Growth during school and for two and a half decades of research work after graduating in 1959 (as a foreign student from Albania in Czech Mining University, VŠB).

1.1 The beginnings of my engagement with the basic problems of the Earth

Regardless that I have not aimed to meddle in the astrophysics of the Earth's origin and to discuss relevant problems, in a moment, meditating alone I envisioned Earth should grow if its interior contained a cosmic energetic factor since its formation, and I became briefly a freelance researcher arguing this idea against the standard theory of the Fixed Earth size. Immediately I wrote out 28 points to validate and argue this idea of mine.

Already, as it seems to me now, this sudden strong turn in my way of thinking was caused because the background of the accumulated concepts, still dormant in my imagination, immediately came into action. These concepts were for all the widely known problems of the Earth, connected with its origin as a cosmic object in a planetary system in an orbital position 26,000 light years from the Galactic Center, dealing with the discussions of all theories and hypotheses,

The Hidden History of Earth Expansion

starting from the planetary system, continuing with the universe origin in the Big Bang¹ and ending with my concept. The latter is about the relationship between granite-basalt, and this was connected with my study of the origin of a rare granitic thick lode² penetrated within a suit of the basalts of the ophiolite belts. That caused me to look at the unusual insufficiency of radioactive isotopes in granites and basalts, i.e., in the Earth's mass. I thought about cutting the peel of an orange or the bark of a young tree trunk with a knife. Both cutting lines become wide furrows after growth. These concepts became the driving force for me to seek and persist with the effort to find the truth of the Growing Earth.

1.2 My Engagement with Earth Growth

Firstly, I found an article, *The Earth that Is Expanding*³, from V.F. Blinov in the Russian Journal Earth's Physics (Fizika Zemli 1973, n 1). It opened up wide horizons to me.

Later, I found a book, *Plate Tectonics - assessments and reassessments*⁴, including even the opposing fixist articles (of Meyerhof and Beleussov). After I learned Plate Tectonics theory, I included the amazing data from the ocean floor that argues for the Earth's growth. The continents, being fixed to their basement, are going away from each other, not by tangential, but by radial shift, while I saw the subduction and asthenosphere mechanisms as improbable, and a futile art.

I argued this idea in a long article submitted to the Geological Journal, but only in Albania. The editorial board of the Journal dismissed the article as unpublishable, detached from research practice and containing unacceptable ideas.

After rejection of the article by the editorial board, I began to work even harder to outline my interpretation of the Earth's growth in a separate book.

When I was in the final phase of writing my book with the title, *Developing Earth*, meaning through the Growing Process, I found Carey's book, *The Expanding Earth* (1976)⁵, a foundational work arguing Earth's Expansion, by which my own horizon expanded further.

¹ Erickson (2008).

² Shehu (1971).

³ Blinov (1973).

⁴ Kahle (1974).

⁵ Carey (1976).

Eventually, I presented my book to the Publishing House in 1981. After the editorial board had finished the preparation to send it to the printing press, the editor-in-chief informed me that the original reviewers were not at the right academic level, and a copy of the book had been sent to the Faculty of Geology and Mining for a new academic evaluation. The publication remained in the Faculty archive until the editor-in-chief retired in 1988, when the obstacles were then overcome without further delay. The interim editor-in-chief Mrs. Karmen Pashai realized publication in 1988¹, naturally in Albanian, in Tirana. Only my nephew Paqesor Shehu, a student of philosophy at the time, evaluated and accepted my idea enthusiastically and stimulated me to continue to prove and publicize such a remarkable theory. Furthermore, through rare discussions, he was always a good consultant to me in this new world view.

1.3 The new phase of my Growing Earth Theory, in English

To make my version of Earth Growth known to a wider scientific audience, I compiled its essence in English, and distributed it in different directions, but received no response. So, I stayed silent for a long time.

At the beginning of the 21st century, I went back to explore and refine my theory, but this time in English, and as I was finishing the English adaptation, I found online Lawrence Myers' article on Earth Expansion², and after a short communication with him, he put me in touch with Giancarlo Scalera in Italy. When he became acquainted with my book in Albanian, he sent me a short response: "you wrote a pondered scientific book, congratulations, welcome to Urbino Workshop (2004)". I presented my article to the workshop, and I took with me four copies of the newly published book in English. Beside Giancarlo Scalera, an Italian, and Lawrence Myers, an American, I met there and discussed with many others, especially Cliff Ollier³ of Australia and Karl-Heinz Jacob of Germany. I gave each of them a gift of my book in English, edited in Tirana a week before.

After a while, Cliff Ollier sent me his impressions of the book, noting that the next issue in the USA had to be cautiously corrected. Furthermore he wrote the preface to the American edition of the book with the title, *The Growing and Developing Earth*⁴ (2005). This preface

¹ Shehu (1988).

² Myers (2004).

³ See also the chapter by Cliff Ollier.

The Hidden History of Earth Expansion



Fig 1. A picture from the presentation of the theory at a Special Meeting organized by the Directorate of Geological Service of Albania, July 25, 2011. From the Left: Professor Afat Serjani, organizer; the author Vedat Shehu; Professor Adil Neziri, Director of Survey and the organizer of the Conversation.

was published in NCGT Journal 38. Furthermore, eleven years later he wrote the preface to my concise edition of the theory under the heading, *The Earth's Core, an Energetic Cosmic Object*¹ (2016), where I determined the core as a Sun-like star in miniature within a stony silicate shell. Before this edition I presented the theory under another title in a workshop held in Italy (2011), and it was edited in the Workshop's selected papers.² I also continued to present my theory in different activities in Albania.

1.4 Essence of my Geothory

The individuality of my interpretation of the Earth's growth is the determination of the Core Kernel, a transformable ultra-dense, ultrathin cosmic matter, positioned as center-spherical, burning layer at the inner peripheral belt of the molten geosphere (outer core) above the solid inner core.

The entire oceanic crust with upper basaltic layer formed gradually by flowing up and hardening the volcanic lava around the old crust of the continents with top granitic layer, is an irreversible process, argued through transformable Core Kernel, as an energetic factor causing the Earth's growth. In addition, the Earth's growth is also demonstrated in another way, by the defects of the Earth's origin in fixed size, as argued by me. These defects are connected with the Earth's core interpretation that it has being allegedly precipitated in molten state and still is radiating its accumulated primordial heat, and moreover, the heat being not enough for Earth's activity, is fulfilled by the heat radiated by decay of the atom's nuclei of the radioactive isotopes, very scarce in the Earth's rocky silicate mass.

Consequently, Core Kernel is the pivot of my Geothory of the Growing Earth, because it is the only way to refute Earth's fixed size, the false premise of the Plate Tectonics' supporters; while they have

⁴ Shehu (2005).

¹ Shehu (2016).

² Shehu (2012/2011), Shehu Scalera et al. (2012).

• XIII • *The Geothery of Growing Earth*



Fig 2. *Vedat Shehu presenting “The Earth’s Growth from Core Kernel Transformation, Geothery of Cosmic Matter Transformation” at the Hall of the Academy of Science of Albania”, November 10, 2016.*



Fig 3. *Right view on seats; from left: Dr. Ing. Arben Pambuku, President of Geological Society; Dr. Eng. Viktor Doda, Director of Albanian Survey; Ing. Tonin Deda, specialist, supporter of theory; Thanas Gjata, Prof. Asc – supporter of the theory, author of a publication titled “Dialogs on the Veracity of the Earth’s Growth”.*

unfairly labelled Earth’s Expansion/Growth as a pseudoscientific belief.¹

This is why I have come to the conclusion that it is impossible to prove the Earth’s Expansion or Growth without refuting simultaneously defects of the premises of the Earth’s origin in fixed size, as it is a standard hypothesis with cosmological authority, whereas Plate Tectonics justifies its inventions with tricks, e.g. asthenosphere and subduction.

Thus, my Geothery belongs into a new scientific field untouched before; in a border line between geoscience and cosmic science.

¹ Sudiro (2014).

2. THE CORE KERNEL OF THE GROWING EARTH, DISCLAIMER OF ASTROPHYSICAL THEORY OF FIXED EARTH SIZE

2.1 Defects of the Standard Theory of Fixed Earth Size

Here I wish to highlight the defects of the standardized cosmological hypothesis of Earth's fixed size. These defects are:

- First, it does not explain the factor that triggered the calm nebula to swirl and transit its material into a planetary disc of the solar system.
- Second, it supposes wrongly that the Earth's inner heat (as for every planet) is generated from the improbable accumulation of the primordial heat and the heat released from the decay of the radioactive isotopes scattered in the mantle and crust; but the heat from these two source, as is calculated by nuclear, particle and quantic physicists, can produce maximally 50% of that energy that is radiated by Earth into space, and the source in order to fill the 50% deficit remains unknown, an open problem of the unanswered question¹.
- Third, the standard hypothesis suggests wrongly that the Earth's core is a percolated² inert mass still in inert molten state since its formation, while, already it can be seen that the core expresses its independent energetic structure. Naturally, these three defects of the standard theory are strong facts negating the fixed Earth size to be the standard theory. They actually reinforce the Earth's Growth from Core Kernel transformation.

2.2 The Reality of the Tectonic Plates of the Growing Earth, Not of Fixed Earth of Plate Tectonics

The reality of lithosphere fragmentation by global fault lineaments in large global areas called tectonic plates, as presented by Plate Tectonics and the gradual growth of the basaltic oceanic lithosphere around

¹ Leyton & Monroe (2017).

² Shannon & Agee (1998).

granitic continents, both clearly demonstrate the crustal growth around continents.

The factual data does not support the Earth's constant size as envisaged by the Plate Tectonic interpretation. In this it continues the old Wegener's hypotheses¹. In reality, these presentations provide evidence of the Earth's growth.

2.3 Nullification of the Plate Tectonics' Subduction

Both subduction and the asthenosphere² of Plate Tectonics are untrue artifices invented to argue for the Earth's fixed size, where is seen that the growing lithosphere sinks and is circulated by flowing in the asthenosphere.

The old published idea of Earth expansion³, was newly reinforced by many theoreticians⁴, and proponents of the Expanding Earth Theory, and some interpreters of the Earth's growth⁵. They, with new views on the data of the oceanic floor, have reconstructed the old idea⁶ into the scientific basis of the Expanding/Growing Earth, and they have argued against the existence of subduction. Continental slabs were grown by oceanic crust formation of upcoming and stiffening magma along the rift lineaments of the mid oceanic ridges. But it is clear to me there are no places for subduction's trenches as is interpreted by Plate Tectonics.

Some authors commonly argue as unacceptable the improbably⁷ of Plate Tectonics's subduction, but do not remove the concept of fixed Earth size to consider the continents' drift as a result of the Earth's growth.

Experimentally, the Earth expansion supporters, through modeling of the Earth's globe, showed that all continental blocks fit together in a model of the earth globe with a radius about 1.6 time smaller than its current radius⁸, representing 40% of today's surface. Furthermore,

¹ *Wegener (1912).*

² *Condie (1997).*

³ *Scalera (2009).*

⁴ *Blinov (1973), Myers (2008), Owen (1984), Scalera (2003), Scalera et al. (2003/1933/1939), Scalera (2011), Scalera (2012), Scalera (2011b), Scalera (2006), Scalera (2009), Maxlow (2005), Cwojdzinski (2012), Ollier (2003), Shen et al. (2008).*

⁵ *DeHilster (2008).*

⁶ *Scalera (2009).*

⁷ *Storetvedt (2010).*

⁸ *Vogel (2012).*

The Hidden History of Earth Expansion

expansion can explain precisely the fragments of continental crust within the oceanic crust¹ identified in 85 cases.

2.4 Growth of Matter Transformation Versus Expansion in Global Tectonics

Here in Fig. 4, I explain the difference between the concept of the Earth's growth and Earth's Expansion. Growth is seen as a process in a growing fruit (Fig. 4A), in a growing tree trunk (Fig. 4B, 4D) through matter transformation from unliving chemical processes to living ones, while expansion means inflation as a balloon or a ball (Fig. 4C). In Earth occurs growth from matter transformation from the ultra-dense state to common state and not expansion of unknown process of transformation.

I compare the growth of a peach with the growth of the Earth. The grown of the core (pit) of the peach fruit is grown together with its coverings through a certain biological process of matter transformation, while the Earth's core's coverings are growing by other process of matter transformation by a transformable Core Kernel.

¹ Yano (2011).

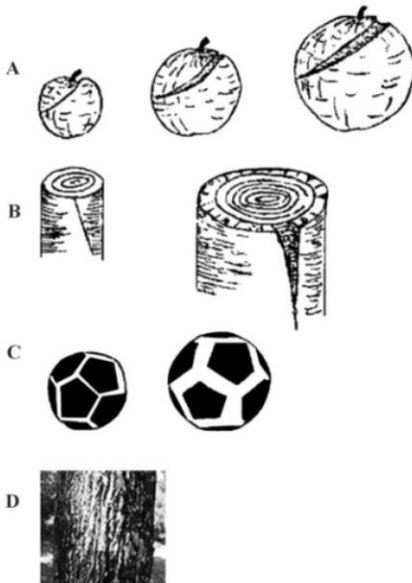


Fig 4. Difference between the notions of expansion and growth: The Earth's expansion as inflation of a ball (C) and the Earth's growth and development as growth of a fruit or a tree trunk (A, B, D) (Author)

I will prove its existence and role further in this article, according to the difference between the concepts of the Earth's Growth and Earth's Expansion as I use the terms related to Fig. 4. In Earth there is growth from matter transformation from the ultra-dense state to a common state and not expansion of unknown process of transformation.

3. THE CORE KERNEL, COSMIC FACTOR OF THE GROWING EARTH AND PLANETS

Continuing with this explanation of the determination of the function and origin of the Core Kernel, I should complete my Geothery that belongs in new scientific field, untouched before, on the border between the geoscience and cosmic science.

Historically the Plate Tectonics of subduction and asthenosphere was evaluated by scientific consensus as the correct interpretation, and expansion was considered an impossible idea. On the contrary, in the following I prove that the Core Kernel is a real factor of the Earth's growth. It is a planetary process that denies the concept of an Earth of constant size, the mistaken premise of Plate Tectonics.

3.1 Identification of the Core Kernel, True Factor of Energetic Core and Growing Earth

The liquid outer core (E) is a key part of the core, and further of the Earth, and its molten geosphere points clearly to the energetic structure of the core, as is seen here in Fig. 5. It attracts immediately our attention as most important geosphere of the core's energetic structure by its molten state and its mass occupying about 29 % of Earth, being 11-time larger than the inner core. Furthermore, its molten mass crossing bordering transitory layers (D" & F) is predominantly going outward to the viscose-solid mantle (D) and fragmentarily inward to the solid inner core (G). This energetic structure is a consequence of the Core Kernel transformation.

I considered the most likely position of the Core Kernel, as I drew it in Fig. 5, by the dashed circular line between both cores. It is placed a little inward of the inner border of the molten geosphere, i.e., of liquid outer core (E), representing an ultra-dense ultrathin center-spherical layer in a cosmic burning state. Thus, I am obliged to stress that the molten geosphere is a magma's reservoir in dynamic equilibrium; the same molten mass with its associated heat that

The Hidden History of Earth Expansion

outgoes from the reservoir, is immediately replaced by Core Kernel transformation.

3.2 Plumes, The Conveyors of the Molten Mass Produced by Core Kernel

Plumes are determined by geophysicists as hot pillar-like structures crossing the mantle within the relatively colder mass that connect molten outer core with volcanic foci.¹ This is an incorrect explanation by supporters of the Earth's fixed size.

The Plate Tectonic interpretation considers plumes only as paths of the heat flow from the core-mantle boundary toward the volcanic hot spots. In contact with lithosphere, it melts the mantle causing allegedly so called flowing asthenosphere, the Tectonic Plates' mechanism that allegedly causes circulation of the lithosphere to hold the Earth at a fixed size. In fact underneath of volcanic foci is the prolonged head of the molten mass that was conveyed by the plume pillars. The plume's structures convey the molten mass of the magma's reservoir outward supplying the volcanic foci with magma and sometimes volcanic eruption.

¹ Lay et al. (2008), Romanowicz & Gung (2002), Young & Lay (1987).

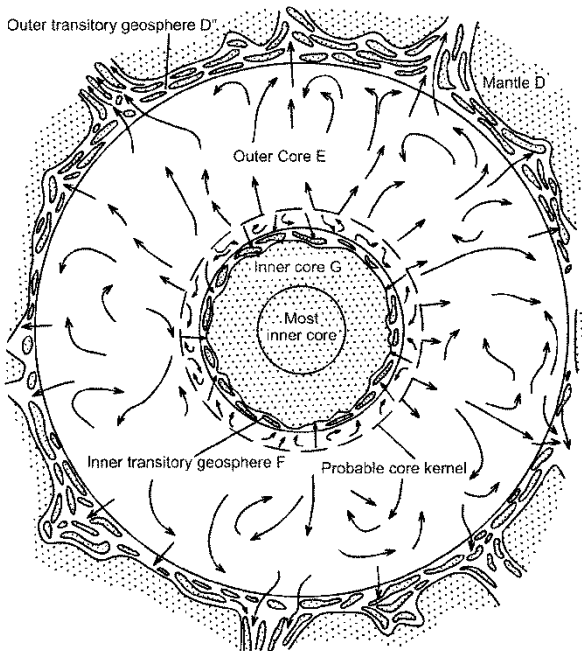


Fig 5. Energetic Structure of the Earth's Core with its distinct molten geosphere, outer liquid core between the solid geospheres of inner core G and mantle D. (Author)

3.3 The Indiscernible Core Kernel, Defining Traits

The position of the indiscernible Core Kernel is impossible to be dictated even by the speed of the seismic waves during the crossing of so an ultra-dense interval, but we distinguished it by scrutinizing the demonstrative effects pointing to the cause. Furthermore, I see an additional fact as an effect of the Core Kernel position. The full rotation of the inner core (in 24 hours) is done faster than the entire Earth, by a fraction of a second; it means that after about 355-360 years the rotation of the inner core outruns the spin of the entire Earth (including the molten geosphere) for a day. It is another datum pointing to the Core Kernel existence and its positioning as a screen separating both cores; upward and inward of the Core Kernel's center-spherical layer.

The separation of the magnetic axis from the geographic one probably belongs to the Earth's separation in two spinning spheres, by Core Kernel screen-like layer.

Composition of the Core Kernel - I determined the composition as transformable ultra-dense matter by applying Einstein's determination that energy is matter, already known in the different fields of modern physics; in particle physics¹ and quantum theory² about how physical fields interact with matter³. Then the guessed particles, sub-particles and ultra-particles, since neutrinos to gravitons, related to the theory of the ultra-dense matter of quark-neutron star, black hole; the gravitomagnetic theory⁴ are components of ultra-dense matter. Furthermore, according to the unified scientific concept of matter shapes that actually has been reached⁵, Core Kernel, determined by me as transformable ultra-dense matter, present matter shapes unification in Earth's energetic core transiting the state of the particles and ultra-particles from their ultra-dense state to common state of the atom-molecular shape and energy shape.

Calculation of the Core Kernel's Mass - By my observation the standard calculation of density and responding mass on dependence of density by speed of the seismic waves, I found a discrepancy in this dependence for the central geospheres (i.e. molten geosphere and inner core) and consequently, I recalculated the corresponding mass of the molten outer core and the inner solid core and found it reduced to nearly one-third to one half the standard mass. This reduction

¹ *Close (2004).*

² *Hooft (2007).*

³ *Hooft (2007).*

⁴ *Elbeze (2013).*

⁵ *Afshordi et al. (2014), Anderson et al. (1999), Barcelo et al. (2009).*

The Hidden History of Earth Expansion

belongs to the mass of the Core Kernel as part of the core that might constitute at least 10% up to 15% of the total mass of the Earth, it means 1/10 to 1/15 of the Earth mass, that is 5.9736×10^{24} kg, then probably the Core Kernel mass is $= 5.97 \times 10^{23}$ to 8.96×10^{23} kg, which would be exhausted in more than half a billion years.

The Core Kernel as Cosmic Fire: I compare the Core Kernel with the common wood fire, which, through burning transforms the combustible wood into heat and non-combustible remnants, ash and gases. The Core Kernel through spontaneous transformation burns a cosmic fuel, producing wave corpuscular fluxes of the energy, including heat, and leaves the unburnable cosmic particles and ultra-particles becoming atom's nuclei composing magma and rocks, as cosmic ash. By this Core Kernel's function, it cannot be of a neutronic mass of the Earth's inner solid core¹.

Ultra-dense cosmic matter of massive star, when explodes ignited, burns as a cosmic fire as in the case of the explosion of the supernova event associated with nucleosynthesis.

The Core Kernel disintegration resembles the Sun's process of the nucleosynthesis, that which, produces atoms' nuclides, simultaneously releases the physical fields of the wave corpuscular fluxes of energy (electromagnetism, magnetism, gravity and neutrinos' radiation). The Core Kernel likewise releases subparticles of the nuclides' of the atoms of the Periodic Table, produces even the wave-corpuscular fluxes of the physical fields (electromagnetism, magnetism, gravity) including radiation of the geoneutrinos² and geothermal heat. So, the geoneutrinos are not released from radioactive decay, as is usually interpreted³, but like solar neutrinos, from the Core Kernel transformation.

This is why the scientists of antiquity considered fire the source of energy, a matter, as is the Sun, a cosmic fire, as every star supplying the cosmos with energetic fluxes and with cosmic ash, the dust of rocky particles.

Even the shape of ultra-dense cosmic matter, when is ignited, burns as a cosmic fire as in the case of the explosion of the supernova event associated with nucleosynthesis.

The Core Kernel disintegration resembles the Sun's process of nucleosynthesis, that which, produces atoms' nuclides, simultaneously releases the physical fields of the wave corpuscular fluxes of energy (electromagnetism, magnetism, gravity and neutrinos' radiation) just as the Core Kernel, during the transformation releases the

¹ *Marvin (2003), Marvin (2014), Noel (2013).*

² *Mareschal et al. (2012).*

³ *Leyton & Monroe (2017).*

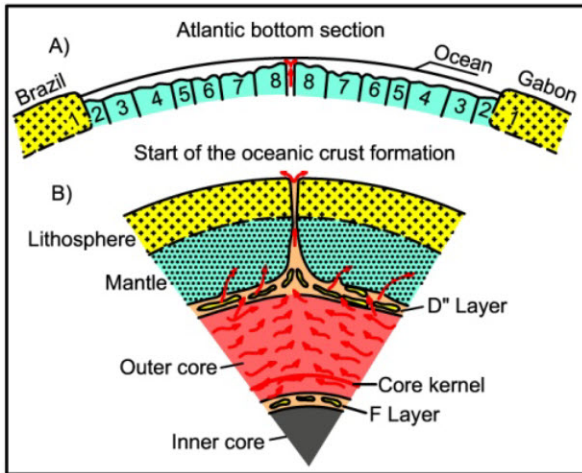


Fig 6. Gradual formation of the crust of oceanic bottom of the Atlantic Ocean (A) starting from moment of broken unique continental crust (B). (Author)

subparticles of the nuclides' of the atoms of the Periodic Table, produces even the wave-corpussular fluxes of the physical fields (electromagnetism, magnetism, gravity) including radiation of the geoneutrinos and the geothermal heat. So, the geoneutrinos are not released from radioactive decay, as is usually interpreted¹, but similarly as solar neutrinos, from the Core Kernel transformation.

It is why the ancient scientists considered fire, the source of energy, as a matter shape; as is the Sun, a cosmic fire, as every star supplying cosmos with cosmic ash, the dust of rocky particles².

3.4 The Crust Growth, Manifestation of the all Geospheres' Growth.

The growth of the entire Earth is demonstrated in the direct observable most upper geosphere in the crust. Here in the scheme of the double figure, A & B (Fig. 6) is drawn the growing effect of the Core Kernel transformation causing gradual formation of the Atlantic Ocean crust, as is presented in the upper part A from the oldest basaltic belts attached at distanced continents' boundary (2-2) up to newest sequential ones at both sides of the current global lineament (8-8), where it is still upcoming magma. In the lower part B, is seen the magma reservoir (outer core, in red) and the path of the outgone magma outward passing through D'' transitory layer and inward through F transitory layer, just when started the formation of the new crust (lithosphere) of the respective oceanic bottom.

¹ Leyton & Monroe (2017).

² Low & Kristna (1970).

The Hidden History of Earth Expansion

More completely, the Earth's growth, is presented here in Fig. 7, orientated toward South Pole, for full view on the inner geospheres expressing the process of the growth.

The formation of the sequential basaltic belts of the top layer of the entire oceanic lithosphere (14) around continents (13) are analogues of sequential formation of the inner center-spherical layers from the older one (11) beneath the lithosphere and following in succession to younger layers (10,9,8,7) up to transitory layer (6), which conveys the molten mass from the magma's reservoir (5) outward. Naturally, a fraction of the molten mass flows through transitory layer (3) into inner core (2 & 1).

3.5. Global Ophiolite Belts, Evidence of the permanent Process of Earth Growth

The presence of ophiolite belts is observed within continental crust during cons, and Pacific "Ring of Fire".

A detail on how ophiolite belts are formed through the growing Earth process is shown in development of the Albanian, as is presented here in Fig. 8. The Albanian territory (Albanides a,b), a short characteristic segment located in central western Dinarides of the Alpine-Himalayan mobile orogenic belt which includes even the

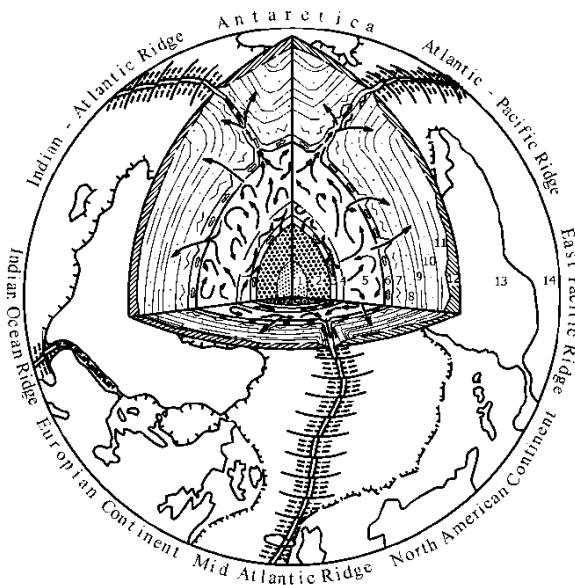


Fig 7. The view inside the globe orientated with south on top, showing three rift valleys of the mid oceanic ridges for better presentation of the connection inner growing the center-spherical layers with the gradual formation of the basaltic belts of upper layer of the oceanic lithosphere.

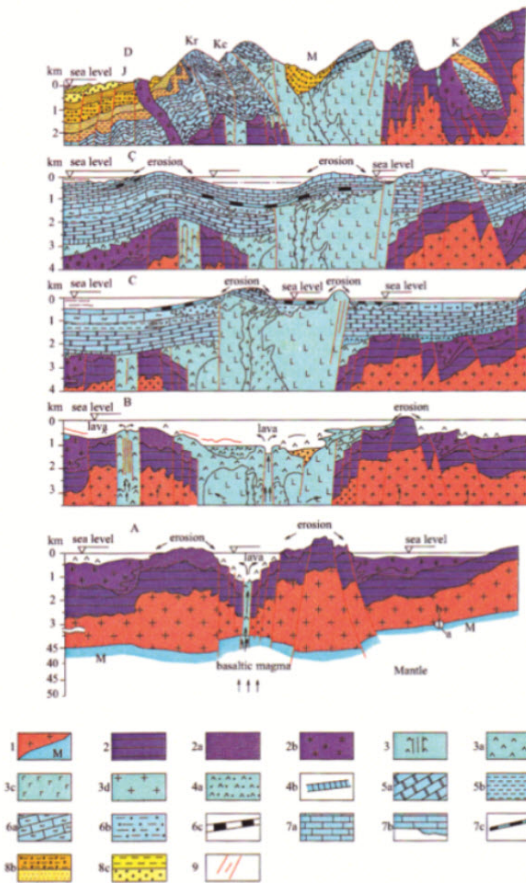


Fig 8. A detailed Scheme of the formation of the ophiolite belt: The structural development of the Albanian ophiolite segment of Alp-Himalayan belt, during the growing Earth process, and the moving apart of the global rift walls of the Ante-alpine crust (the violet layer), during the Alpine Stage of crustal development (the blueish-green layers) (Author).

Mediterranean as a nascent ocean. This ophiolite belt began to form in the eve of Alpine tectonic era (Perm-Triassic, greenish blue formations: 3a, 3b, 3c, 3d, 4a) and was continuing to form among the older crust fragments with overlapping layers of the older tectonic era during Caledonian and Hercynian stages (violet layers 2, 2a, 2b), when starts the formation of the albanian geo-structures during Alpine development (greenish blue formations: 3a, 3b, 3c, 3d, 4a; beige and yellow).

The absence of a top granitic layer above the ophiolite belts tells us that the during penetration of the ophiolites as additional mass to the basaltic magma and the mantle's fragments, the tectonic fault's side walls of the crust moved apart and minor, slow Earth's growth occurred. Surely, such development of the ophiolite belts show that they are not klippe of nappe, as they are interpreted by Plate Tectonics

The Hidden History of Earth Expansion

in the Alp-Himalaya belt¹. Nor are they the remnant indicators of oceanization². Their composition and structural position clearly show that they are formed in situ through a growing Earth process. The Ophiolite belts demonstrate the process that causes formation of rock types of oceanic floor along the rift valleys of the mid oceanic ridges³.

This means that Earth's growth was not a spontaneous process that started 200 million years ago, but a permanent process from Core Kernel transformation. The rapid growth began and was demonstratively manifested when the dominant paths of upcoming magma were stabilized forever and became the global rifts of the current mid oceanic ridges. The process can be clearly observed today, and is the continuation of the gigantic phenomenon of the ocean crust growth, and the Earth's growth.

3.6 The Core Kernel Transformation As Cause of the Geodynamic phenomena

Fig. 9 shows the effect of the plume's molten mass, when it is conveyed upward and penetrates the lithosphere. It is accumulated in different locations and levels. Some becomes the foci of the volcanic lava erupted at the surface. Some does not move upward but accumulates up to a certain size, when it causes gravitational disequilibrium.

The restoring of the gravitational equilibrium causes relative movement of blocks. Slow tectonic movement during causes folding, while instantaneous shift of the tectonic block causes earthquakes⁴.

¹ Yuecheng et al. (1998).

² Orlenok (2010).

³ Dimitriev et al. (1971).

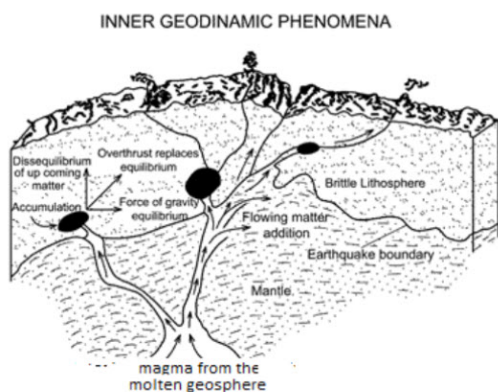


Fig 9. Schematic block-diagram of the inner geodynamic phenomena and processes (Author)

• XIII • The Geothery of Growing Earth

The shift of one tectonic block (or plate) over another occurs diagonally when the radial (vertical) direction of the force of gravitational disequilibrium of upcoming magma and its consolidation in the shifting block is opposed by the tangential (horizontal) force that is replacing the ruined equilibrium causing overthrust of replaced equilibrium. The acting forces of the replacing gravitational equilibrium is drawn by me within the mobile block in Fig. 9.

Seismologists supporting Earth's fixed size negate the upcoming magma from the molten geosphere (outer core) through a plume structure, and they interpret it as only heat flow that starts; "from the core-mantle boundary through channels for the core-derived energy to rise to the shallow Earth. The seismic energy is stored in the nearest available space"¹ causing earthquakes.

According to some observations, earthquakes may be incited even by the Sun's activity² and might be triggered even by the Sun-Moon position related to Earth tides³.

The earthquake shock is not a spontaneous event, but is a result of the gradual processes caused by Core Kernel's transformation producing the magma and energy, which, through their accumulation within the lithosphere bring signals in the earthquake's epicentral zone. These are: the emanation of particles, sub-particles and nuclei of Helium-3; disturbance of the local Earth's physical fields are geomagnetic, geo-gravitational and geothermal fields. If these phenomena, adding even slight deformations of the crust geomorphology *et cetera*, would be observed, recorded, and used as diagnostic signs, then the respective registrations would trace the way that would enable seismologists to predict easy the shock of the strong earthquakes at the hypocenter.

3.7 Core Kernel in Planets

Since the beginning of the planetary system formation, the cores of the initial planets were formed with different size according to the mass of the Core Kernel of each planet during the process of the planet-formation transiting the dispersed matter of the nebula into the objects of Solar System. The rock droplets within nebula are mainly from rock minerals composing basalts of the Earth, planets, dwarf planets, and comets⁴.

⁴ Scalera (2006).

¹ Choi (2010), Choi & Maslov (2010).

² Love & Thomas (2013).

³ Kokus (2004).

⁴ Zolensky et al. (2006).

The Hidden History of Earth Expansion

Commonly, the planets with a smaller mass of the Core Kernel and smaller gravitational field are nearer to the Sun, in the inner part of the solar disc and were developed without gaseous cover, while the planets of the larger mass of the Core Kernel are far from the Sun, in the outer part of the solar disc, and they were consolidated with very thick gaseous cover.

The basaltic volcanic crust of the Earth's oceans is similar to the volcanic basaltic crust observed in Mercury, Venus, Mars, and in our Moon¹, as well as in dwarf planets and in small planet-like objects², as a result of their Core Kernels transformation. Regardless of their mass, the presence and degree of the Core Kernel consumption up to exhaustion is clearly even by current existence of magnetic field. The Existence in these planets the basaltic crust without current volcanic activity is clear evidence of the exhausted of Core Kernel transformation, the source of previous intensive volcanic activity.

The peculiarities of Mercury, presented in Fig. 10, point to its Core Kernel being in an exhausted phase, indicated by the very weak magnetic field (1.1 % of the Earth's one), and by the presence of a very thin center-spherical layer in molten state.

The latter is a remnant of the outer core, covering the unusual large solid inner core. Both cores have an exaggerated large radius (75% of the Mercury's radius).

Let's add even more peculiarities: its size is 5% of that of the Earth's, the orbital eccentricity to Sun 3 times greater, and average orbital distance 2.6 times nearer to the Sun than that of Earth. My

¹ Wood (1968).

² Makarenko (1983), Peale (1999), Young (2010).

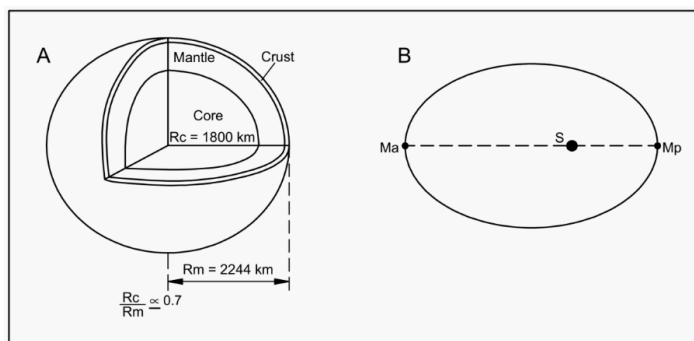


Fig 10. Mercury's peculiarities:

A: The Mercury's inner structure with very exaggerated large core.

B: Mercury's perihelion of unusual position (more than three times of that of Earth)

S " Sun; M_p - Mercury position in perihelion; M_a " Mercury position in aphelion.

explanation of Mercury's peculiarities is that the exaggerated large inner core of Mercury result from the transformation of the relevant size of the initial Core Kernel that had produced lager silicate cover, but, its peculiarities influenced that the lighter and overheated, outer atom-molecular matter of the still unconsolidated planet might have been attracted by the Sun; when it probably had even a greater orbital eccentricity, and a shorter distance from the Sun.

Even on the large planets Jupiter, Saturn, Uranus, Neptune the presence of a Core Kernel in transformable process is indicated by their strong intensity of the magnetic field.

While, by an intensive volcanic activity is expressed presence of the Core Kernel in the Jupiter's moon Io.

3.8 The Sun, a gigantic core with its Core Kernel

Observing the Sun's overheated atmosphere structure shown in Fig. 11, we distinguish easily unexpected temperature difference between the photosphere's surface (about 6,000 K) and at lower corona of the interval of 5500 - 5700 km above photosphere ($> 1\ 000\ 000$ K) that shows the centrifugal dispersal of the radiation from its inner energy.

The raised heat above the photosphere is consequence of the cosmic burning intensification, i.e., occurs the acceleration of the interaction and transformation of the ultra-sub-particles, released still unburned from the beneath of the lithosphere.

Analogically, this phenomenon occurs very probably even in the Earth's core; the outward going heat associating the molten mass released from Core Kernel, most probably, causes the highest temperatures in the mid-level of the molten outer core, before the start of the gradual cooling and solidifying toward the solid mantle.

Let's remember some known facts of the Sun-Earth interference as consequence of the same process between so much far objects, as is Sun and earth core, but connected by the processes occurring in both kernels in Earth's core as in a Sun in miniature, and in Sun as in a gigantic core:

- - Earth's magnetic field is excited by the fluxes of the solar wind and also by the Earth's seismic activity around the epicenter some hours before an earthquake shock occurs; - The release of the solar-neutrinos is analogue of the release of the geo-neutrinos fluxes; - The helium-3 is result of the processes running only in Sun; while its presence in volcanic gases, as well as in natural gases, indicates that it is production of the Core Kernel transformation;

The Hidden History of Earth Expansion

TEMPERATURES OF SUN'S ATMOSPHERE STRUCTURE

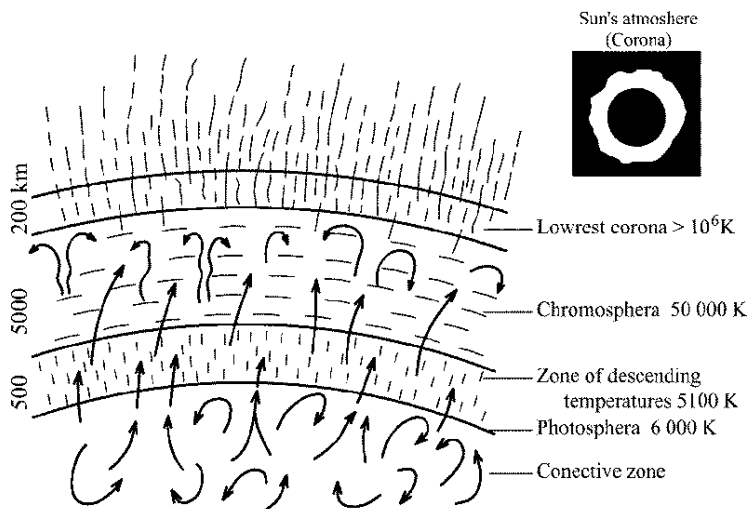


Fig 11. A schematic presentation of the Sun's corona (atmosphere) temperatures (Author).

- - The Earth's largest earthquake events release preliminary fluxes that interfere with the fluxes of the solar activity. Such interference is identified as Solar Seismic Precursor and is related to the Sun's cycles¹, implicating the Sun's radiation in Earth dynamics².

In Conclusion, the core of the Earth is a miniature Sun inside the silicate cover, while the Sun is an ultra-gigantic core without the silicate shell or cool cover of gases as planets have, but the Sun is covered by overheated gases.

These conclusions allow us to interpret the Sun's phenomena better through the investigation of the Earth's core, and vice versa through Sun's observation we can understand the core's energetic structure better.

4.1 Cosmic Origin of the Core Kernel, DURING Transition of the Nebula to Planetary System

Already, the scientists concluded that supernova event might trigger the calm cosmic nebula to swirl³; so, this idea is in conformity with my

¹ Choi (2010a), Choi (2010b).

² Cataldi & Straser (2016).

³ Young (2010).

interpretation of the Core Kernel origin related to the explosive supernova's nucleosynthesis.

A supernova is a manifestation of an instant colossal explosion of a massive ultra-dense star, which ejects and disperses most of its mass in a violently expanding cloud of dust and debris associated with glowing radiation and process of nucleosynthesis (new element formation), reaching a diameter of the solar system or more, and looks like a huge star for weeks or sometimes months

The association of this unusual illumination with nucleosynthesis most probably points out the disintegration of the ultra-dense nano-beads. Furthermore, within the supernova's remnant mass is observed new formation of a fast-spinning neutron star.

In some cases, no spinning neutron star is observed¹. Probably, in this case, the supernova's ultra-dense mass has been totally scattered in space.

4.2 The Core Kernel, and the Earth's Formation among Planets

Hence, the ultra-dense remnants of supernova most probably incited the calm nebula to swirl and to continue to form planetary disc (Fig. 12)

These ultra-dense dispersed remnants like nano-beads, through the nebula's swirling, accreted, and became kernels of the potential cores as the fiery gravitational centers attract the dispersed mass of nebula and developed into planets. This conforms with standard interpretation of transition of the rotating nebula in planetary disk, with the specificity that Core Kernels gradually, through interaction with nebula material, were covered by convective metallic and silicate mass of the cores of the potential silicate proto-planets in molten state orbiting the gigantic dominant burning core, the young Sun of the potential planetary system. Afterwards, began the independent development of the planets, when the cores were consolidated and began to dominate attraction of the gaseous-dust-debris content of cloud over the atom-molecular mass produced from the Core Kernel, and at the end, the space of the planetary system was cleaned from the thick and dark material of cloud, and the planets were exposed forever in transparent space, but still in molten state in small sizes and ultra-high temperature. While the transformable Core Kernels continued to produce magma's atom molecular components and the corresponding associating heat.

¹ *Schirber (2005).*

The Hidden History of Earth Expansion

Ultradense globules from a big blast
triggering the planet-formation

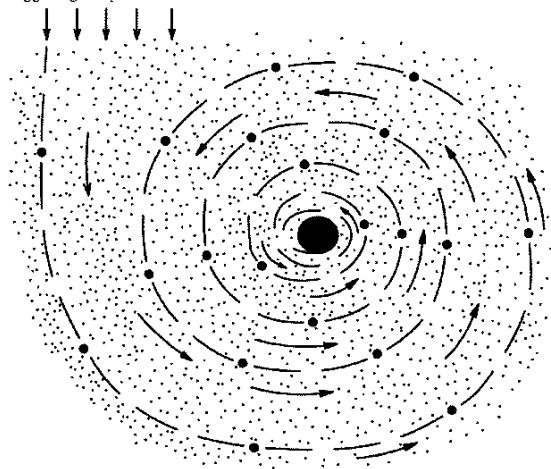


Fig 12. Scheme about formation of the planets' Core Kernels from the ultra-dense globules or nano-beads inside of the gaseous-dusty cloud of the initial solar system.
(Author)

Thus, our Earth was formed and consolidated, and it then developed by known geological history, but also through the growing process of the Core Kernel transformation. The process of the stabilization of the entire Earth crust continued for a very long-time until the beginnings of the Proterozoic Eon, just 2.5 billion years ago (2.1 billion years after planetary system formation). But the development of the continental crust through the growing process, continued very slowly, until the growth has accelerated around 200 million years ago. Then the process of upcoming magma of the oceanic type was established among the ruptured continental crust fragments, causing their growth as global plates. The stabilization of the routes of upcoming magma toward the mid-oceanic ridges occurred when the growth of the silicate cover of the outer core has reached certain limits, and the thickened lithosphere reached a critical distance from the outer core.

4.3 The Planets Orbiting Binary Stars and the Remote Ones

The formation and development of the planetary system of binary stars¹, and remote planets verify the Core Kernel theory. It means that the presence of the transformable swirling spherules or Core Kernels within a nebula of the potential solar system is the factor that causes

¹ Hodgin (2008), Welsh & Doyle (2013).

the nebula's swirling, and it can form and develop the planets even without the influence of a gravitational field of the responding star.

Consequently, the sun-like stars of main-sequence, substellar objects and planets are formed and developed by the same unique process, just as of the Earth's Core Kernel.

4.4 Energetic Core and research Problems

Hydrocarbons Geneses “There are two main theories about the origin of hydrocarbons (oil and gases) the biogenic theory and the abiogenic one. The theory of Core Kernel transformation confirms The abiogenic theory. The abiogenic formation of the hydrocarbon molecular bonds most likely occurs as a result of the direct synthesis of atoms of hydrogen and carbon through Core Kernel transformation as other molecular bonds. In an environment, where the oxygen has been exhausted, especially forming silicate minerals and stable oxides including water, the carbon and hydrogen are connected in their hydrocarbon molecular bonds (C_nH_{2n+2}).

Research in Ophiolite Belts - Through the Core Kernel transformation is argued that ophiolite belts are formed in their places (in situ), and are not the klippe of nappes, as are explained by Plate Tectonics along Alp-Himalaya orogen. So, the research perspective of the ore sources in the ophiolite belts is raised toward depth.

4.5 Core Kernel and the Big Bang Singularity

Regardless that it is at all seems as the Earth's processes and phenomena belong only to the geoscience, and I naturally have not aimed to meddle in the astrophysics or Big Bang's cosmology, and to discuss about the relevant problems, but the origin of ultra-dense Core Kernel from the ultra-dense remnants of a big intragalactic explosion of ultra-dense super massive star causing supernova event does face me with Big Bang image and singular expanding universe, which is also imitated by the expanding Earth.

Here it must be stressed that basis of the Bing Bang and the Universe Expansion was a wrong interpretation of the red shift in the spectra of the light of the distant galaxies, as if the shift is caused because the galaxies are travelling away from the Earth at a fantastic speed. Factually, this phenomenon occurs when the light wavelength released from the distant galaxies is shifted towards the red end of the spectrum, but this doesn't mean that this shift is result of the receding of the galaxies. Later, the important physicists and cosmologists

The Hidden History of Earth Expansion

concluded that red shift is a consequence of the phenomena occurring within light fluxes during its crossing different environments along an unusual distance of billions of light-years. So, some anomalous observations in redshifts from the distant galaxies are discussed.

The Core Kernel originating from the ultra-dense remnants of an intragalactic big explosion, i.e., supernova-like event, occurring in real space of interaction and transformation, has been adapted forcibly into the Big Bang hypotheses, as an absolute remote explosion in emptiness. The real world: The Earth, Galaxy and the galaxies of the continuing space, all are functioning of the matter's interaction and transformation. Every phenomenon and every existence in every point of the continuing cosmic space is a consequence of the interaction and transformation of the matter shapes. Naturally, the primitive notion of the universe, as space enclosed within Earth's sky is meaningless. The Big Bang singularity is an artifice that alludes to an expansion of an imaginary cosmic sky, that continually inflates and creates space from the nothingness. The supporters of the Bing Bang concept interpret many cosmic phenomena and new discoveries as remnants of this imaginary explosion and create the new ideas, that allegedly are facts from the Singular Big Bang.

The Big Bang theory is deeply opposed to the universality of matter unity¹, and some very important astrophysicists², evaluating the Big Bang as a mere creation myth. They concluded that the so-called Big Bang is "an event that emerged from nothing, no one has reason to think this event occurred in the distant past."

The interpretations about some cosmic phenomena as evidence of Big Bang event are baseless. The space cannot be enclosed and to form the universe as one single object.

CONCLUSIONS

Within the scope of this article, it has become possible to argue the Earth's growth by the real presence, function and origin of the transformable cosmic Core Kernel, and by the real documentation of the defects of the cosmological theory of the Earth's fixed size. Consequently, based in such arguments, the following conclusions can be drawn:

- 1. Hence, it becomes necessity that the theorists of the astrophysics and cosmology must consider the Earth's inner processes and phenomena as of a planet among planets of the enormous

¹ *Sciama (2012/1959), Shehu (2004).*

² *Alfven (1984), Lerner (1992).*



Fig 13. The Publications of Vedat Shehu's theory as a book. Explanation: 1. First Edition (in Albanian), 1988 under title *The Developing Earth*, it means the Earth is developing through growing process of cosmic Core Kernel transformation starting since the process of planetary system formation from the nebula. 2. *The Growing and Developing Earth*, 2005 (USA, English); <https://www.amazon.com/Growing-Developing-Earth-Vedat-Shehu/dp/1419616633> 3. *The Growing and Developing Earth*, 2009 (in Albanian) 4. *The Earth's Core, an Energetic Cosmic Object* (2016, English, USA). It means "Earth's core is a Sun-like star in miniature within its stony shell, while the Sun is a super-gigantic core within overheated hydrogen and helium cover. Publisher: CreateSpace (March 31, 2016) and was presented to a meeting of the Albanian Earth's scholars at Library Hall of Academy of Sciences (October 11, 2016). Shehu currently lives at Boston, Massachusetts, USA. <https://www.amazon.com/Earths-Core-Energetic-Cosmic-Object/dp/1512290874>

planetary systems of the Galaxy, and to observe Earth as their cosmic object of investigation. So, they would confirm the presence, function of the Core Kernel as the factor of the ultra-dense transformable cosmic matter causing Earth's growth. If it would occur, then this change would offer epochal advances, especially in physics and general knowledge of the worldview.

- 2. The known outer liquid core is the magma's reservoir in the dynamic equilibrium; the outgone molten mass dominantly outward causing growth of stony silicate geospheres, and fragmentarily inward causing growth of solid inner core is replaced by same mass and heat produced from the Core Kernel transformation. So, the same mass disintegrated from the Core Kernel is constructed in atom molecular mass causing growth. So, the entire Earth, probably, grows in constant mass, if the cosmic graviton fluxes do not excite Core Kernel to absorb them into transforming process

The Hidden History of Earth Expansion

- 3. The Earth's core should be seen as a star-like Sun in miniature with a rocky silicate coat, while the Sun may be seen as a gigantic core inside a cover of overheated gases. Investigation of the core would enable us to understand the Sun better, while observations of the Sun would help us to understand the Earth's core better.

Acknowledgments: Special thanks to Professor Cliff Ollier of the University of Western Australia for his suggestions for my main editions of this theory. He, while respecting my concepts and ideas, and being a versatile editor in improving my English at all, did an excellent editorial work on this essay. I am also grateful to Stephen Hurrell for his excellent work on improving the presentation of my theory.

About the Contributor



Vedat Shehu is an Albanian American geologist. He received his doctoral degree as an engineering geologist from the Technical University of Ostrava (VSB) in Czechoslovakia in 1959, and in the course of his subsequent career was awarded with three labor prizes and a prize of the Republic. Furthermore, he defended the dissertation topic for the title of the doctor of geological science and then got the high title of the Research Lieder, equivalent to Professor. After three years working for ore research, he was subsequently engaged until his retirement in geological engineering research in the mountainous tectonic zones, mainly focusing on studies of rivers for hydropower stations, and other important constructions; he was also involved in other studies, such as landslides, earthquakes and hydrology, producing many varied scientific papers. Specifically, his concept that the Albanian ophiolite zone was formed through process similar to those along the rift valleys of oceanic ridges, causing oceanic crust formation, became the factor that led him to deal with the great problem of Earth's internal energy and to determine a cosmic factor running as a kernel of the Earth's core since the formation of the planetary system. He calls this interpretation Geothery (of Growing Earth of the Cosmic Core Kernel Transformation) and has published it several times in various forms since 1988.

This essay was first published as a chapter in the 2020 book, *The Hidden History of Earth Expansion*, which is widely available from good bookshops in both Hardback and Paperback editions, as well as a Google eBook.

The Hidden History of Earth Expansion presents the personal histories of some of the most well-known researchers into Earth expansion in 14 original essays. In addition to furnishing us with their personal histories, as they strived to explore the seemingly overwhelming evidence for confirmation of Earth expansion, the authors' highlight areas where further research is required.

The chapters expressly written for the book are:

• **Introduction** •

The Science Innovators: an historical context 11
Stephen W. Hurrell

• **Chapter I** •

From hunch to serious consideration 89
Hugh G. Owen

• **Chapter II** •

My Memories and Ideas about the Expanding Earth 105
Cliff Ollier

• **Chapter III** •

An insight into self-organizing processes in geology with respect to Earth expansion 131
Karl-Heinz Jacob

• **Chapter IV** •

Modelling the Earth: a brief history 147
James Maxlow

• Chapter V •

My work on the Expanding Earth Theory 173
Jan Koziar

• Chapter VI •

My lifetime adventure with an expanding Earth 217
Stefan Cwojdzinski

• Chapter VII •

Orogenesis on a growing Earth 239
Carl Strutinski

• Chapter VIII •

From dinosaurs to Earth expansion 265
Stephen W. Hurrell

• Chapter IX •

The Problem with Earth expansion 287
John B. Eichler

• Chapter X •

A Personal History of Earth Expansion 321
William C. Erickson

• Chapter XI •

How I got involved with Earth Expansion 351
David Noel

• Chapter XII •

Should Plate Tectonics be replaced by Expanding Earth? 365
Zahid A. Khan and Ram Chandra Tewari

• **Chapter XIII** •

The Geothery of Growing Earth: My Viewpoint of Cosmic Core Kernel Transformation	385
<i>Vedat Shehu</i>	

• **Chapter XIV** •

Receding Seas of Earth expansion	413
<i>Richard Guy</i>	
References	425
Index	465

References

- Afshordi, N. Mann, Robert, B. and Pourhasan, R. (2014). The Black Hole at the Beginning of the Time. *Scientific American*.311 (2) 38-43.
- Ager, D.V. (1986). Migrating fossils, moving plates and an expanding Earth. *Modern Geology*, 10:377-390.
- Ahmad, F. (1960). Glaciations and Gondwanaland. *Geol. Surv. India. Rec.* 86, 637-674.
- Ahmad, F. (1990). The bearing of paleontological evidence on the origin of the Himalayas. In: A. Barto-Kyriakidis (Ed). *Critical aspects of the Plate Tectonics theory*. Theophrastus Publication, Greece. 1, 129-142.
- Aitchinson, J. C. and 4 others. (2007). Shoshonites in southern Tibet record Late Jurassic rifting of a Tethyan intra-oceanic island arc. *Jour. Geology*. 115, 197-213.
- Alfvén, H. (1942). On the cosmogony of the solar system. *Stockholms Observatoriums Annaler*, 14, 2–1.
- Alfvén, H. (1954). *On the origin of the solar system*. Oxford University Press, New York.
- Alfvén, Hannes (1984). *Cosmology: Myth or Science? For the Golden Jubilee of the Indian Academy of Sciences, representing a culture which has investigated cosmology for four millennia*, edited in *Jour. Astrophysics and Astronomy*, No. 5, 79-98.
- Alfvén, H. (1992) *Cosmology: myth or science? IEEE transactions on plasma science*, vol. 20, no. 6, pp. 590–600.
- Alfvén, H. Arrhenius, G. (1972). Origin and evolution of the earth-moon system. *The Moon*, 5(1-2), 210–230.
- Alfvén, H. Arrhenius, G. (1976). *Evolution of the solar system*. NASA. Document number NASA-SP-345.
- Ali, J.R. and Aitchinson, J.C. (2005). Greater India. *Earth Science Review*, 72, 169-188.
- Allaby, M. (2013). *A Dictionary of Geology and Earth Sciences*. ISBN-13: 978-0199653065.

The Hidden History of Earth Expansion

- Amirmardfar, R. (2012). Relationship Between Gravity and Bio-Evolution - The Increasing Gravity Theory. In Boschi, Cwojdzinski & Scalera - editors (2012). The Earth expansion evidence – A Challenge for Geology, Geophysics and Astronomy.
- Anderson, D.L. Yu-shen zhang, Tanimoto T. (1992). Plume heads, continental lithosphere, flood basalts and tomography. W: Storey B. Alabaster T. Pankhurst R.J. (eds.): Magmatism and the Causes of Continental Break-up. Geol. Soc. Special. Publ. 68: 99-124.
- Anderson, S.F. et al. (1999). Mapping low density galactic: third helium Lyman-alpha forest. *Astronomic* . 117, 56-62. DOI: 10.1086/300698; e-print: astro-ph/9808105 | PDF.
- Antoshkina, A. Königshof, P. (2008). Lower Devonian reef structures in Russia: An example from the Urals. *Facies*. Doi: 10.1007/s10347-008-0135-7.
- Aretz, M. Webb, G.E. (2003). Western European and eastern Australian Mississippian shallow-water reefs: A comparison. In: Proceedings of the XVth International Congress on Carboniferous and Permian Stratigraphy, Utrecht, The Netherlands, 10-16 August, 2003 (Ed. T.E. Wong), *Roy. Ned. Acad. Arts Sci.* 433-442.
- Armijo, R. (1984). Quaternary extension of the Tibet plateau: field observation and technical implication. *International Symposium Geology Himalayas*. 2, 17 (abstract).
- Arrhenius, G. De, B. R. & Alfvén, H. (1974). Origin of the ocean. In *The Sea*, volume vol. 5 (pp. 839–861). Wiley New York, NY.
- Badham, J.P.N. (1982). Strike-slip orogens – an explanation for the Hercynides. *J. Geol. Soc. London*, 139, 493-504.
- Barcelo, C. Liberati, S. Sonogo, S. Visser, M. (2009). Black Stars, Not Holes. *Scientific American* 301 February 46-52.
- Barnett, C.H. (1962). A suggested reconstruction of the land masses of the Earth as a complete crust. *Nature*, 195 (4840), 447-448.
- Becker, G. (1910). *Age of the Earth*. The Smithsonian institution, Washington.
- Beaudette, C.G. (2002). *Excess Heat: Why Cold Fusion Research Prevailed*. Oak Grove Press South Bristol, ME.
- Belousov, V.V. (1979). Why don't I accept Plate Tectonics? *EOS*, 207-211.
- Berhe, S.M. (1999). Ophiolites in Northeast and East Africa: implications for Proterozoic crustal growth. (London: *Journal of the London Geological Society*; V. 147; No. 1, 51-57.

References

- Bird, P. (2003). An updated digital model of plate boundaries. *Geochemistry. Geophysics. Geosystem.* 52, doi 10.1029/2001 GC 000252.
- Blackett, P.M.S., Bullard, E., Runcorn, S.K. (eds.) (1965). *A Symposium on Continental Drift.* The Royal Society, London, x +323 pp.
- Blinov, V.F. (1973). On the hypothesis of Earth's expansion. (In Russian). *FizikaZemli* 1, 27-35.
- Bogolepow (1930), *Die Dehnung de Lithoshare, Zeit, dt, geol. Ges.*, 82: 206-228.
- Boucot. J. and Gray, J. (1987). The Tethyan concept during the Paleozoic. In: K.G. McKenzie (Ed). *Shallow Tethys 2.* A. A. Balkema, Rotterdam, 31-50.
- Bouilhol, P. Jagoutz, O. Hanchar, J. M. and Dudas, F.O. (2013). Dating the India-Eurasia collision through arc magmatic records. *Earth Planet Science Letter.* 366, 163-175.
- Boschi, Cwojdzinski & Scalera - editors (2012). *The Earth Expansion Evidence: A Challenge for Geology, Geophysics and Astronomy. Selected Contributions to the Interdisciplinary Workshop held in Erice, Sicily, Italy, 4-9 October 2011 at the Ettore Majorana Foundation and Centre For Scientific Culture.*
- Brezinski, D.K. Cecil, C.B. Skema, V.W. Stamm, R. (2008). Late Devonian glacial deposits from the eastern United States signal an end of the mid-Paleozoic warm period. *Palaeogeogr. Palaeoclim. Palaeoecol.* 268, 143-151.
- Bridges, L.W. (2002). *Our expanding Earth. The ultimate cause.* Oran V. Siler Printing. Denver Colorado.
- Brownlee, R. & Cox, A. (1961). Early solar evolution. *Sky and Telescope*, (pp. 252–256).
- Brosske (1962). *Wachst die Erde mit Naturkatastrophen? Die 'Expansions-Theorie' (Does the Earth grow with natural catastrophes? The expansion theory.).* 'Sanus' L. Brosske, Abtlg. Verlag, Dusseldorf-Benroth 41.
- Brunschweiler, R.O. (1983). Evolution of Geotectonic Concepts in the Past Century. In: Carey, S.W. (ed.): *Expanding Earth Symposium.* Sydney 1981, University of Tasmania, 9-15.
- Buchan, K.L. Ernst, R.E. (2004). Diabase dyke swarms and related units in Canada and adjacent regions. *Geological Survey of Canada Map 2022A, scale 1:5,000,000, accompanying report 39 pp.*
- Bullard, E. (1975). The emergence of plate tectonics: a personal view. *Annual Review of Earth and Planetary Sciences*, 3(1), 1-31.

The Hidden History of Earth Expansion

- Bullard, E.B. Everett, J.E. and Smith, A.G. (1965). The fit of the continents around the Atlantic. *Philosophical Transaction of the Royal Society of London*, A258, 41-51.
- Burrett, C., Berry, R. (2000). Proterozoic Australia—Western United States (AUSWUS) fit between Laurentia and Australia, *Geology* 28, 103-106.
- Carey, S.W. (1955). Wegener's South America–Africa Assembly, Fit or Misfit? *Geological Magazine*, 92(3), 196-200.
doi:10.1017/S0016756800063548.
- Carey, S.W. (1958). The tectonic approach to continental drift. In: Carey S. Warren (Ed). *Continental Drift – A Symposium* University of Tasmania, Hobart 177-355. Reprinted 1959.
- Carey, S.W. (1961). Palaeomagnetic evidence relevant to a change in the Earth's radius (a reply to Cox & Doell). *Nature*, 190 (4770), 36-36.
- Carey, S.W. (1976). *The Expanding Earth*. *Developments in Geotectonics*, 10, Elsevier, Amsterdam.
- Carey, S.W. (1978). *A philosophy of the Earth and Universe*. *Papers and Proceedings of the Royal Society of Tasmania*, 112, 5-19.
- Carey, S.W. (Editor) (1983). *The Expanding Earth*. A Symposium (Ed. S.W. Carey), University of Tasmania.
- Carey, S.W. (1983). Tethys and her forebears. In: *The Expanding Earth*. A Symposium (Ed. S.W. Carey), University of Tasmania, 169-187.
- Carey, S.W. (1988). *Theories of the Earth and Universe: A History of Dogma in the Earth Sciences*. Stanford University Press, Stanford, California, xviii+413 pp. ISBN 08047 1364 2.
- Carey, S.W. (1996). *Earth, Universe, Cosmos*. University of Tasmania, Hobart, pp. 204.
- Carey, S.W. (2000). *Earth, Universe, Cosmos*. 2nd Edition. University of Tasmania, Hobart.
- Cataldi, G. & D., Straser, V. (2016). Solar activity correlated to the M7.0 Japan earthquake occurred. *At New Concepts in Global Tectonics Journal*, V. 4, No. 2, p. 79-85.
- CGMW & UNESCO (1990). *Geological Map of the World*. Commission for the Geological Map of the World, Paris.
- Chatterjee, S., Hotton III, N. (Editors) (1992). *New Concepts in Global Tectonics*. Texas Tech University Press. ix+ 449 pp.
- Chatterjee, S., Scotese, C.R. (2010). The wandering Indian plate and its changing Biogeography during the Late Cretaceous-Early Tertiary period. In: S. Bandyopadhyay (Ed). *New Aspects of Mesozoic Biogeography*. Springer-Verlag, Germany, 105-126.

References

- Chatterjee, S., Bajpai, S. (2016). India's northward drift from Gondwana to Asia during the Late Cretaceous-Eocene. *Proc. Indian National Science Academy*, 82, 479-487.
- Chatterjee, S., Goswami, A. Scotese, C.R. (2013). The longest voyage: Tectonic, magmatic and paleoclimatic evolution of the Indian plate during its northward flight from Gondwana to Asia. *Gondwana Research*, 23,238-267.
- Choi, D.R. (2010). The January 2010 Haiti Seismic Disaster Viewed from the Perspective of the Energy Transmigration Concept and Block Tectonics. *NCGT Newsletter*, 54,. 36-54.
- Choi, D.R. Maslov, L. (2010). Global seismic synchronicity. *NCGT Newsletter*, 55, 66-74.
- Choi, D.S. Showman, A.P. Brown, R.H. (2009). Cloud features and zonal wind measurements of Saturn's atmosphere as observed by Cassini/VIMS. *J. Geophys. Res.* 114, E04007. Doi: 10.1029/2008JE003254.
- Ciechanowicz, S., Koziar, J. (1994). Possible relation between Earth expansion and dark matter. In: F. Selli, M. Barone (eds.), *Proceedings of the International Conference "Frontiers of Fundamental Physics"* (Olympia, Greece, 27–30 September, 1993). Plenum Press, New York and London, pp. 321–326.
- Close, F. (2004). *Particle Physics, a very short introduction*. (Oxford: Oxford University Press. 160. ISBN 0-19 280434-0.
- Colbert, E.H. (1973). Continental drift and the distributions of fossil reptiles. In: D.H. Tarling and S.K. Runcorn (Eds). *Implications of continental drift to the Earth Sciences*. Academic Press, 393-412.
- Colbert, E.H. (1984). Mesozoic reptiles: India and Gondwanaland. *Indian Journal Science*, 11, 25-37.
- Colpron, M., Nelson, J.L. (2009). A Palaeozoic Northwest Passage: incursion of Caledonian, Baltican and Siberian terranes into eastern Panthalassa, and the early evolution of the North American Cordillera. *Geol. Soc. London, Spec. Publ.* 318/1, 273-307. Doi: 10.1144/SP318.10.
- Condie, K.C. (1997). *Plate tectonics and crustal evolution*. Fourth Edition, (Oxford: Butterworth-Heinemann, An Imprint of Elsevier Science Linacre House, Jordan Hill, Oxford OX2 BDP 200 and Wheeler Road, Burlington, MA, USA. 282.
- Copper, P. (2002). Reef development at the Frasnian/Famennian mass extinction boundary. *Palaeogeogr. Palaeoclimat. Palaeoecol.* 181, 27-65.

The Hidden History of Earth Expansion

- Copper, P. Scotese, C.R. (2003). Megareefs in Middle Devonian supergreenhouse climates. *Geol. Soc. Am. Spec Paper* 370, 209-230.
- Cox, C.B. (1975). Distribution of Triassic tetrapods families. In: D.H.Tarling and S. K. Runcorn (Eds). *Implications of continental drift to the Earth Sciences*. Academic Press, 369-371.
- Crawford, A.R. (1979). Gondwanaland and the Pakistan Region. Pp. 103-110 in *Geodynamics of Pakistan*, Ed. A. Farah and K.A. De Jong. Geological Survey of Pakistan, Quetta.
- Creer, K.M. (1965). An expanding Earth? *Nature*, London 205, 539-544.
- Cwojdziański, S. (1995) - Recenzja: R.Dadlez, W.Jaroszewski. *Tektonika*. Wyd. Nauk. PWN. *Prz. Geol.* 43, 3: 255 - 258. /Review of the book R.Dadlez, W.Jaroszewski. *Tectonics*. Sci Publ.PWN/.
- Cwojdziański, S. (2001) Czy możliwa jest dyskusja naukowa w geotektonice. *Przeg. Geol.* 49, 10/1: 856 – 857 / Is the discussion in geotectonics possible ? *Geol. Rev.* 49. 10/1: 856-857.
- Cwojdziański, S. (2003). The Tectonic Structure of the Continental Lithosphere Considered in the Light of the Expanding Earth Theory - A Proposal of a New Interpretation of Deep Seismic Data. *Polish Geol. Inst. Spec. Papers*, 9, 1-80.
- Cwojdziański, S. (2004). Mantle plumes and dynamics of the Earth interior - towards a new model. *Prz. Geol. /Geol. Review* 52.8/2:817 - 826.
- Cwojdziański, S. (2012). Geological Evolution of the Sudety Mts. (Central Europe) on the Expanding Globe. In: *The Earth Expansion Evidence, A challenge for geology, geophysics and astronomy. Selected Contribution to the Workshop, held in Erice, Sicily, Italy (4-9 October 2011)*. 263-273. Post-conference publication edited by Giacarlo Scaleria (editor in chief), Enzo Boschi, and Stefan Cwojdziański. Rome, 492.
- Cwojdziański, S. (2016). History of a discussion: selected aspects of the Earth expansion v. plate tectonics theories. *Geological Society, London, Special Publications*, 442, SP442-24.
- Cwojdziański, S., Koziar, J. (1995) Konferencja międzynarodowa - Zagadnienia ekspandującej Ziemi. Wrocław-Sosnówka, 14-17.11.1994. *Prz.Geol.* 43, 4: 349 - 351.
- Czechowski, L. & Leliwa-Kopystynski, J. (2013). Remarks on the Iapetus' bulge and ridge. *Earth Planets Space*, 65, 929-934. Doi: 10.5047/eps.2012.12.008.
- Daly, R.A. (1917). Metamorphism and its phases. *Geol. Soc. Am. Bull.* 28, 375-418.

References

- Davydov, V.I. (2016). Biotic paleothermometry constrains on Arctic plates reconstructions: Carboniferous and Permian (Zhokhov Island, De-Longa Group Islands, New Siberian Archipelago). *Tectonics*, 35, 2158-2170. Doi: 10.1002/2016TC004249.
- Dearnley, R. (1965). Orogenic fold-belts, convection and expansion of the Earth. *Nature*, 206 (4991), 1284-1290.
- De Celles, P.G. Kapp, P. Gehrels, G. Ding, L. 2014. Paleocene-Eocene foreland basin evolution in the Himalaya of southern Tibet and Nepal: Implications for the age of initial India-Asia collision. *Tectonics*, 33, 824-849.
- De Hilster, D. (2008). *The Growing Earth*. p. 24. At: <www.dehister.com/docs/TheGrowingEarth.ppt>, 77.
- De Lury, J.S. (1931). The auto-traction hypothesis of crustal dynamics and mechanics. *Science* (No. 1900), 73, 590.
- De Lury, J.S. (1941). Correlation of schistosity and tectonic theory. *Am. J. Sci.* 239, 57-73.
- Dewey, J.F. (2015). A harbinger of plate tectonics: a commentary on Bullard, Everett and Smith (1965) 'The fit of the continents around the Atlantic'. *Phil. Trans. R. Soc. A*, 373(2039), 20140227.
- Dewey, F., Bird, J.M. (1970). Plate Tectonics and geosynclines: *Tectonophysics*, 10, 624-638.
- Dewey, J.F. Shackleton, R.M. Chang C. Sun Yin. (1988). The tectonic evolution of the Tibetan plateau: *Phil. Trans. Royal Soc. London*, 379-413.
- Dickins, J.M. (1994). The nature of the oceans or Gondwanaland, fact and fiction. In: *Gondwana Nine*. A. A. Balkema, Netherland, 387-396.
- Dietz, R.S. (1961). Continent and Ocean Basin Evolution by Spreading of the Sea-Floor. *Nature*, London 190, 854-857.
- Dietz, R.S. Holden, J.C. (1970). Reconstruction of Pangea: break-up and dispersion of continents. *Permian to Recent. J. Geophys. Res.* 75: 4,939-4,956.
- Dilek, Y. and Robinson, P.T. (2003). *Ophiolites in Earth History: Geological Society of London Special Publication 218* edited by Dilek, Y. & Robinson, P. T. 723 p.
- Dilek, Y. Shallo, M. and H. Furnes. (2005). Rift-drift, seafloor spreading and subduction tectonics of Albanian ophiolites. *International Geology Review* V. 47. (New York: Taylor & Francis Group. 147-176.
- Dimitriev, L.V. Vinogradov, A.P. and Udentsev, G.B. (1971). Petrology of ultrabasic rocks from rift zones of The Mid-Indian Ocean Ridge. *Philosophical Transactions of the Royal Society of London. Series A*

The Hidden History of Earth Expansion

- Mathematical and Physical Sciences, V. 268, No. 1192. A discussion on Petrology of igneous and Metamorphic rocks from the Oceanic Flore. (London: The Royal Society,). 403-408.
- Ding, L., Maksatbek, S., Cai, F.L., Wang, H.Q., Song, P.P., Ji, W.Q., Zhang, L.Y., Mohammad, Q., Upendra, B. (2017). Processes of initial collision and suturing between India and Asia. *China Earth Sciences*, 60, 635-657.
- Doglioni, C., Green, D.H., Mongelli, F. (2005). On the shallow origin of hotspots and the westward drift of the lithosphere. *Geol. Soc. Am. Spec Paper 388*, 735-749. Doi: 10.1130/2005.2388(42).
- Doglioni, C., Carminati, E., Cuffaro, M., Scrocca, D. (2007). Subduction kinematics and dynamic constraints, *Earth-Science Reviews* 83, 125–175.
- Doglioni, C., Carminati, E., Crespi, M., Cuffaro, M., Penati, M., Riguzzi, F. (2015). Tectonically asymmetric Earth: From net rotation to polarized westward drift of the lithosphere. *Geosci. Frontiers*, 6, 401-418.
- Dorschner, J. (1986). *Planeten – Geschwister der Erde?* Urania Verlag, Leipzig, 128p.
- Dumoulin, J.A., Harris, A.G., Gagiev, M., Bradley, D.C., Repetski, J.E. (2002). Lithostratigraphic, conodont, and other faunal links between lower Paleozoic strata in northern and central Alaska and northeastern Russia. *Geol. Soc. Am. Spec. Paper 360*, 291-312.
- Drayson, A. (1859). *The Earth we inhabit, its past, present, and probable future.*
- du Toit, A.L. (1937) *Our Wandering Continents: An Hypothesis of Continental Drifting*, Oliver & Boyd, London, UK.
- Dziewoński, A.M., Anderson, D.I. (1984). Seismic tomography of the Earth's interior. *American Scientist*. 72: 483-494.
- Egyed, L., (1956). Determination of changes in the dimensions of the Earth from palaeogeographical data. *Nature*, 178, n.4532, 534-534.
- Egyed, L., (1957). A new dynamic conception of the internal constitution of the Earth. *Geol. Rundsch. B.* 46, p. 101–121.
- Eichler, J.B. (2011). A New Mechanism for Matter Increase Within the Earth. *Nexus*, April-May, 43-48; 82.
- Eichler, J.B. (2015). Rhetoric and paradigm change in science: Three case studies. Master's thesis, University of Arkansas at Little Rock.
- Eichler, J.B. (In press). *An Infinite Universe.*

References

- Eisbacher, G.H. (1983). Devonian-Mississippian sinistral transcurrent faulting along the cratonic margin of western North America – A hypothesis. *Geology*, 11, 7-10.
- Eisenhower, D. (1961). President Dwight Eisenhower Farewell Address. <https://www.c-span.org/video/?15026-1/president-dwight-eisenhower-farewell-address>.
- Elbeze, A.C. (2013). On the existence of another source of heat production for the earth and planets, and its connection with gravitomagnetism. Published online: <http://www.ncbi.nlm.nih.gov/pmc/articles/PMC3825064/> p.18
- Ellis, M. Watkinson, A.J. (1987). Orogen-parallel extension and oblique tectonics: the relation between stretching lieations and relative plate motions. *Geology*, 15, 1022-1026
- Elliston, J. (2003). Professor S.W. Carey's struggle with conservatism. In Scalera, G and Jacob, K-H. (Editors) 2003. *Why Expanding Earth? A book in honour of Ott. Christoph Hilgenberg. INGV publisher Roma* 97-114. (a reprint from Newsletters. *The Australian Geologist*, 125).
- England, P. Houseman, G. Sonder, L. (1985). Length scales for continental deformation in convergent, divergent, and strike-slip environments: analytical and approximate solutions for a thin viscous sheet model. *J. Geophys. Res.* 90 (No. B5), 3551-3557
- England, P. Jackson, J. (1989). Active deformation of the continents. *Earth Planet. Sci. Ann. Rev.* 17, 197-226.
- Erickson, F.P. (2008). Absolute space, absolute time and absolute motion. 2678. Publisher: Xlibris, ISBN: 978-1599261171.
- Erickson, W.C. (1980). *Orgonomic Geophysics: The Earth as an Orgonotic System*. Unpublished but posted online at Erickson (2001).
- Erickson, W.C. (1982). *Necessary Giants: Gravity and the Evolution of Dinosaurs*. Unpublished.
- Erickson, W.C. (1985). *Rogue Scientist from Down Under*. Unpublished but posted online at Erickson (2001).
- Erickson, W.C. (1988). *Ever Since Wegener: A Brief History of the Expanding Earth Hypothesis*. Unpublished but posted online at Erickson (2001).
- Erickson, W.C. (1989). *Bipedal Hopping and the Origin of Dinosaurs*. Unpublished but posted online at Erickson (2001).
- Erickson, W.C. (1990). *On the Origin of Dinosaurs and Mammals*. Unpublished but posted online at Erickson (2001).
- Erickson, W.C. (2001). *Bill Erickson's Earth Science Web Page*. <https://www.frontier-knowledge.com/earth>

The Hidden History of Earth Expansion

- Ernst, W.G. (1971). Metamorphic zonation on presumably subducted lithospheric plates from Japan, California and the Alps. *Contrib. Min. Petr.* 34, 43-59.
- Ernst, W.G. (1973). Blueschist metamorphism and P-T regimes in active subduction zones. *Tectonophysics*. 17,255-272.
- Ernst, W.G. (1993). Metamorphism of Franciscan tectonostratigraphic assemblage, Pacheco Pass area, east-central Diablo Range, California Coast Ranges. *Geol. Soc. Am. Bull.* 105, 618-636.
- Eskola, P. (1939). Die metamorphen Gesteine. In: *Die Entstehung der Gesteine. Ein Lehrbuch der Petrogenese.* (Ed. C.W. Correns), Julius Springer, Berlin (Reprint 1970), 263-407.
- Evans, J.V. (1958). Insect distribution and continental drift. 134-141. In *Carey (1958)*.
- Ewing, M., Heezen, B.C. (1956). Some problems of Antarctic submarine geology. *Geophys. Monogr.* 1(462), 75-81.
- Fairbridge, R.W., (1964). Thoughts about an expanding globe. In: *Subramanian, A.P. and Balakrishna, S. (eds.): Advancing Frontiers in Geology and Geophysics.* Osmania University Press, Hyderabad, 59-88.
- Farley, K.A. Neroda, E. (1998). Noble Gases in the Earth's Mantle. *Annual Review of Earth and Planetary Sciences*. Vol. 26: 189-218
From:
<http://www.annualreviews.org/doi/abs/10.1146/annurev.earth.26.1.189>
- Felt, H. (2012). *Soundings: The story of the remarkable woman who mapped the ocean floor.* ISBN: 978-0-8050-9215-8.
- Fernandez, M.S. Khosla, A. (2015). Para taxonomic review of the Upper Cretaceous dinosaurs eggshell belonging to the family Megaloolithidae from India and Argentina. *Historical Biology*, 27, 158-180.
- Ferry, J. (1992). Regional metamorphism of the Waits River Formation, Eastern Vermont: delineation of a new type of giant metamorphic hydrothermal system. *J. Petr.* 33, 45-94.
- Fleck, L. (1981). *Genesis and development of a scientific fact.* University of Chicago Press.
- Forsyth D., Uyeda, S.. (1975). On the Relative Importance of the Driving Forces of Plate Motion, *Geophysical Journal of the Royal Astronomical Society* 43, 163-200.
- Fox, S.W., Dose, K. (1977). *Molecular Evolution and the Origin of Life* (Revised ed.). Marcel Dekker, New York, 370 pp.

References

- Fox, S.W, Harada, K., Kendrick, J. (1959). Production of spherules from synthetic proteinoid and hot water: *Science* 129: 1221-1223.
- Frankel, H. (2012). *The Continental Drift Controversy. A Four Volume Set.* Cambridge University Press.
- Frisch, W. Meschede, M. (2005). *Plattentektonik. Kontinentverschiebung und Gebirgsbildung.* Wissenschaftliche Buchgesellschaft, Darmstadt, 196p.
- Galilei, G. (1638). *Two New Sciences.* Holland.
- Ganapathy, R. Keays, R. R. Laul, J. & Anders, E. (1970). Trace elements in Apollo 11 lunar rocks: Implications for meteorite influx and origin of moon. *Geochimica et Cosmochimica Acta Supplement*, vol. 1, p. 1117.
- Ganapathy, R. & Anders, E. (1974). Bulk compositions of the moon and earth, estimated from meteorites. In *Lunar and Planetary Science Conference Proceedings*, vol. 5, pp. 1181–1206.
- Gansser, A. (1973). Facts and theories on the Andes. *J. Geol. Soc. London*, 129, 93-131.
- Gansser, (1991). Facts and theories on the Himalayas. *Eclogie. Geol. Helv.* 84, 33-59.
- Gapais, D. Le Corre, C. (1980). Is the Hercynian belt of Brittany a major shear zone? *Nature*, 288 (No. 5791), 574-576.
- Garzanti, E. Hu, X. (2014). Latest Cretaceous Himalayan tectonics: Obduction, collision or Deccan related uplift? *Gondwana research*, doi: 10.1016/j.gr.2014.1003.1010.
- Gibbons, A. S. and 4 others. (2015). A tectonic model reconciling evidence for the collisions between India, Eurasia and intra-oceanic arcs of the central-eastern Tethys. *Gondwana research*, doi: 10.1016/j.gr.2015.1001.1001.
- Gilliland, W.N. (1964). Extension of the theory of zonal rotation to explain global fracturing. *Nature*, 202, 1276-1278
- Gold, T. (1987). *Power from the Earth.* Dent, London. Pp. 208.
- Gold, T. (1988). *Das Jahrtausend des Methans. Die Energie der Zukunft – unerschöpflich, umweltfreundlich.* Econ Verlag Düsseldorf, Wien, 256p
- Gold, T. (1989). New ideas in science. *J. Sci. Explor.* 3/2, 103-112
- Gong, E. Zhang, Y. Guan, C. Chen, X. (2012). The Carboniferous reefs in China. *J. Palaeogeogr.* 1, 27-42. Doi: 10.3724/SP.J.1261.2012.00004.

The Hidden History of Earth Expansion

- Goswami, A. and 4 others. (2013). A troodontid dinosaur from the latest Cretaceous of India. *Nature Communications*, 4, 1-5.
- Glenn, W. (1982). *The road to Jaramillo. Critical years of the revolution in Earth Science.* Stanford University Press. 459 pp.
- Greenfield, J. (1974). *Wilhelm Reich vs. the U.S.A.* W.W. Norton & Company, New York, 380 pp.
- Gurnis, M. Hall, C. Lavier, L. (2004). Evolving force balance during incipient subduction. *Geochemistry Geophysics Geosystem*, 5, 1-31.
- Gutenberg, B. (1951). *Internal constitution of the Earth*, volume 7. Dover Publications Inc.
- Guy, R. (2005). *The Mysterious Receding Seas.* ISBN: 978-1413439922
- Gurnis, M. Yang, T. Cannon, J. Turner, M. Williams, S. Flament, N. Müller, R.D. (2018). Global tectonic reconstructions with continuously deforming and evolving rigid plates. *Computers & Geosciences*, 116, 32-41. Doi: 10.1016/j.cageo.2018.04.007
- Hall, C.E. and 6 others. (2003). Catastrophic initiation of subduction following forced convergence across fracture zones. *Earth and Planetary Science Letters*, 212, 15-30.
- Hall, R. (1996). Reconstructing Cenozoic SE Asia. In: *Tectonic Evolution of SE Asia* (Eds. R. Hall, D.J. Blundell), *Geol. Soc. London Spec. Publ.* 106, 153-184
- Hall, R. (2002). Cenozoic geological and plate tectonic evolution of SE Asia and the SW Pacific: computer-based reconstructions, model and animations. *J. Asian Earth Sci.* 20, 353-431.
- Hall, R. (2012). Late Jurassic-Cenozoic reconstructions of the Indonesian region and the Indian Ocean. *Tectonophysics*. 570-571, 1-41. Doi: 10.1016/j.tecto.2012.04.021.
- Hallam, A. (1983). *Great Geological Controversies.* Oxford University Press.
- Hambry, M. J. & Harland, W. B. eds. (1981). *Earth's Pre-Pleistocene glacial record.* Cambridge: Cambridge University Press, London.
- Hanmer, S. Vignerresse, J.L. (1981). Mis en place de diapirs syntectoniques dans la chaîne hercynienne: Exemple des massifs leucogranitiques de Locronan et de Pontivy (Bretagne Centrale). *Bull. Soc. Geol. France*, S7-XXII/2, 193-202. Doi: 10.2113/gssgfbull.S7-XXII.2.193
- Hamilton, W.B. (1979). *Tectonics of the Indonesian Region*, US Geological Survey Professional Paper 1078. United States Government Printing Office, Washington, DC, ix + 345 pp.

References

- Hamilton, W.B. (2011). Plate Tectonics began in neoproterozoic time, and plumes from deep mantle have never operated. *Lithos*, vol. 123, no. 1-4, pp. 1-20.
- Hamilton, W.B. (2019). Toward a myth-free geodynamic history of Earth and its neighbors, *Earth-Science Reviews* 198, 102905.
- Harrison, C.G.A. (2016). The present day number of tectonic plates. *Earth, Planet and Space*, 68, doi: 10.1186/s40623-016-0400-x.
- Heezen, B.C., (1959a). Geologie sous-marine et déplacements des continents. *Colloques Internationaux du Centre National de la Recherche Scientifique*, N° LXXXIII, Paris, 295-302.
- Heezen, B.C., (1959b). Paleomagnetism, continental displacements, and the origin of submarine topography. *International Oceanographic Congress. Reprints of Abstracts: Am. Assoc. Advance. Sci.*
- Heezen, B.C. (1960). The rift in the ocean floor. *Scientific America*, 203, 98-110.
- Heezen, B.C., Ewing, M. (1961). The mid-oceanic ridge and its extension through the Arctic Basin: *Geology of the Arctic*.
- Heezen, B.C., Tharp, M. (1965). Tectonic fabric of the Atlantic and Indian Oceans and continental drift. *Philosophical transactions of the Royal Society of London. Series A, Mathematical and Physical Sciences*, 258(1088), 90-106.
- Heezen, B.C., Tharp, M. (1966). *Physiography of the Indian Ocean*.
- Heirtzler, J.R. (1977). A Minority View in Geophysics, *Science* 196, 778.
- Hess, H.H. (1962). History of Ocean Basins. In Engel, A.E.J. James, H. L. and Leonard, B.F. (Editors). *Petrologic Studies. A volume in honour of A.F.B. Boddington*. Geological Society of America 599-620.
- Herndon, J.M. (2005). Whole-Earth decompression dynamics. *Curr. Sci.* 89/11, 1937-1941.
- Herndon, J.M. (2011). Geodynamic basis of heat transport in the Earth. *Curr. Sci.* 101/11, 1440-1450.
- Hilgenberg, H. (2003). The life and work of Ott Christoph Hilgenberg: as seen by his daughter, Helge Hilgenberg. In Scalera, G., Jacob, K-H., (Editors) (2003). *Why Expanding Earth? A book in honour of Ott Christoph Hilgenberg*. INGV publisher Rome. 465 pp with extensive bibliography.
- Hilgenberg, O.C. (1933). *Vom Wachsenden Erdball. (On Growing Earth)* Berlin Giessmann und Bartsch 56 pp.
- Hilgenberg, O.C. (1933/2003). The Formation and development of Earth: contraction or expansion. In: *Why Expanding Earth?* (Eds)

The Hidden History of Earth Expansion

- Scalera, G. Jacob, K. Proceedings of the Lautenthal Colloquium held on May 26, 2001 in honor of Ott Christoph Hilgenberg. Rome (2003).
- Hilgenberg, O.C. (1960?/2003). The formation and development of the Earth: contraction or expansion? (Fragments from the last unpublished manuscript). In Giancarlo Scalera, and Karl-Heinz Jacob (eds): Why Expanding Earth? A book in honour of O.C. Hilgenberg. Proceedings of the Lautenthal Colloquium, held on May 26, 2001. INGV publisher Rome, 53-64.
- Hilgenberg, O.C. (1962). Rock magnetism and the Earth's palaeopoles. *Geofisica pura e applicata*, 53(1), 52-54.
- Hilgenberg, O.C. (1966). Die Paläogeographie der expandierenden Erde vom Karbon bis zum Tertiär nach paläomagnetischen Messungen. *Geologische Rundschau*, 55(3), 878-924.
- Hilgenberg, O.C. (1967/2015). Why Earth expansion? Rheologic evidence of the Earth's expansion.
<https://www.dinox.org/publications/Hilgenberg1967.pdf>
- Hilgenberg, O.C. (1974). Geotektonik, neuartig gesehen. *Geotektonische Forschungen (Geotectonic Research)*, 45, Schweizerbartsche Verlagsbuchhandlung, Stuttgart, 194p.
- Hodgin, R.C. (2008). NASA snaps photo of remote planet. Information by (November 13, 2008). At: [http://www.tgdaily.com/trendwatch-features/40192-nasa-snaps-photo-of-remote-planet-25-light-years-away-using-visible-light-](http://www.tgdaily.com/trendwatch-features/40192-nasa-snaps-photo-of-remote-planet-25-light-years-away-using-visible-light)
- Holland, H.D. (1984). *The Chemical Evolution of the Atmosphere and Oceans*. Princeton, N.J.: Princeton University Press.
- Hole, M. J. & Natland, J. H. (2019). Magmatism in the North Atlantic Igneous Province; mantle temperatures, rifting and geodynamics. *Earth Science Reviews*, [Earth_2018_391]. <https://doi.org/10.1016/j.earscirev.2019.02.011>
- Holmes, A. (1913). *The Age of the Earth*.
- Holmes, A. (1931). Radioactivity and Earth Movements. *Transactions of the Geological Society of Glasgow*, 18, 559-606, 1931, <https://doi.org/10.1144/transglas.18.3.559>.
- Holmes, A. (1944). *Principles of Physical Geology*. Thomas Nelson, xii+532, reprinted 1945, revised and expanded 1965.
- Holmes, A. (1965). *Principles of Physical Geology*. Second edition. Nelson, London, pp.1288.
- Holmes, D., Holmes, A. (1978). *Principles of Physical Geology*. Third edition.

References

- Hooft, G. (2007). The conceptual basis of quantum field theory. In: *The Oxford Handbook of Philosophy and physics*. (Ed. Robert Batterman, p. 661-729).
- Hoshino M. (1998). *The Expanding Earth: Evidence, Causes and Effects*. Tokai University Press, 295 pp.
- Hu, X. and 5 others. (2016). The timing of India-Asia collision onset – Fact, theories, controversies. *Earth Science Review*, 160, 264-299.
- Huisman, R.S., Beaumont C. (2014) Rifted continental margins: The case for depth-dependent extension, *Earth and Planetary Science Letters* 407 148-162.
- Hurrell, S.W. (1994). *Dinosaurs and the Expanding Earth*. One-off Publishing, 222 pp. ISBN 0952260301
- Hurrell, S.W. (2011). *Dinosaurs and the expanding Earth: One explanation for the gigantic sizes of some pre-historic life*. U.K.: One off, 3rd edition. ISBN 9780952 26037 0
- Hurrell, S.W. (2011). Ancient life's gravity and its implications for the expanding Earth. (Extended abstract). In *Extended Abstracts of the 37th Interdisciplinary Workshop of International School Geophysics. Sicily. "The Earth Expansion Evidence: A challenge for Geology, Geophysics and Astronomy"* Volume: Pre-conference book - Extended abstracts. DOI: 10.13140/2.1.1522.4643.
- Hurrell, S.W. (2012). Ancient Life's Gravity and its Implications for the Expanding Earth. In *The Earth expansion evidence – A Challenge for Geology, Geophysics and Astronomy - Selected Contributions to the Interdisciplinary Workshop of the 37th International School of Geophysics*. Aracne Editrice, Roma.
<https://www.earth-prints.org/handle/2122/8838>
- Hurrell, S.W. (2014). A New Method to Calculate Palaeogravity Using Fossil Feathers. *NCGT Journal*, v. 2, no. 3, September, 2014. p 29-34.
- Hurrell, S.W. (2017). Early speculations about Earth expansion by Alfred Wilks Drayson (1827-1901) and William Thorp (1804-1860).
<https://dinox.org/hurrell2017>
- Hurrell, S.W. (2018). A palaeogravity calculation based on weight and mass estimates of Giraffatitan (=Brachiosaurus) brancai.
<https://dinox.org/hurrell2018a>
- Hurrell, S.W. (2019a). Palaeogravity calculations based on weight and mass estimates of four Tyrannosaurus rex specimens.
<https://dinox.org/hurrell2019a>

The Hidden History of Earth Expansion

- Hurrell, S.W. (2019b). A palaeogravity calculation based on weight and mass estimates of *Acrocanthosaurus atokensis*.
<http://dinox.org/hurrell2019b>
- Hurrell, S.W. (2019c). Palaeogravity calculations based on weight and mass estimates of two *Coelophysis bauri* specimens.
<http://dinox.org/hurrell2019c>
- Hurrell, S.W. (2019d). A Palaeogravity calculation based on weight and mass estimates of *Gigantoraptor erlianensis*.
<http://dinox.org/hurrell2019d>
- Hurrell, S.W. (2019e). A Palaeogravity calculation based on weight and mass estimates of *Ankylosaurus magniventris*.
<http://dinox.org/hurrell2019e>
- Hurrell, S.W. (2019f). A Palaeogravity calculation based on weight and mass estimates of *Euoplocephalus tutus*.
<http://dinox.org/hurrell2019f>
- Hurrell, S.W. (2019g). A Palaeogravity calculation based on weight and mass estimates of *Megalosaurus bucklandii*.
<http://dinox.org/hurrell2019g>
- Hurrell, S.W. (2019h). Palaeogravity calculations based on weight and mass estimates of *Paraceratherium transouralicum*.
<http://dinox.org/hurrell2019h>.
- Hutton, J. (1788). *Theory of the Earth: or an investigation of the laws observable in the composition, dissolution, and restoration of land upon the globe*. Royal Society of Edinburgh.
- Hutton, J. (1795). *Theory of the Earth*. Volume I.
- Hsü, K. (ed.), (1982). *Mountain Building Processes*. Academic Press, London, pp.263.
- Ingersoll, R.V. (1988). Tectonics of sedimentary basins. *Geol. Soc. Am. Bull.* 100, 1704-1719.
- Irving, E. (1977). Drift of major continental blocks since the Devonian. *Nature*, 270, 304-309.
- Ishikawa, A., Pearson, D.G., Dale, C.W. (2011). Ancient Os isotope signatures from the Ontong Java Plateau lithosphere: tracing lithospheric accretion history, *Earth and Planetary Science Letters* 301 159-170.
- Jackson, H.R. and Gunnarson K. (1990). Reconstructions of the Arctic: Mesozoic to Present. *Tectonophysics* 172, 303-322.
- Jacob, K.-H. (1974). Deutung der Genese von Fluoritlagerstätten anhand ihrer Spurenelemente, insbesondere an fraktionierten seltenen Erden (Interpretation of the genesis of fluorine deposits

References

- based on trace elements, with emphasis on fractionated rare earths), TU Berlin, 99 pp.
- Jacob, K.-H. (2010). Über Selbstorganisation und ihre Bedeutung für die Geologie. (About self-organization and its importance in geology). *Zeitschrift für Geologische Wissenschaften (ZGW)*, Berlin, 38, 295-310, 6 plates.
- Jacob, K.-H., Dietrich, S., Krug, H.-J. (1994). Self-organization in mineral fabrics. In: *Fractals and Dynamic Systems in Geosciences* (Ed.: J.H. Kruhl), Springer, 259-268.
- Jacob, K.-H., Dietrich, S. (2012). Electric Field Forces and Self-Organization. From Common Concepts to New Insights. In: *The Earth Expansion Evidence – A Challenge for Geology, Geophysics and Astronomy. Selected Contributions to the Interdisciplinary Workshop of the 37th International School of Geophysics EMFCSC, Erice (4-9 October, 2011)* (Eds.: G. Scalera, E. Boschi, S. Cwojdzinski), 407-419.
- Jagoutz, O., Royden, L., Holt, A.F., Becker, T.W. (2015). Anomalously fast convergence of India and Eurasia by double subduction. *Nature Geosciences Letters*. 8, 475-478.
- Japsen, P. Bidstrup, T. Lidmar-Bergström, K. (2002). Neogene uplift and erosion of southern Scandinavia induced by the rise of the South Swedish Dome. In A.G. Doré, J.A. Cartwright, M.S. Stoker, J.P. Turner & N. White (eds.): *Exhumation of the North Atlantic margin: timing, mechanisms and implications for petroleum exploration*, 299–314. Geological Society, London, Special Publication 162.
- Jardetzky, W.S. (1929). La rotation zonale de la planète et les dérives continentales. *Acad. Roy. Serbe, Glas. Belgrade*, 134, 150-157
- Jardetzky, W. (1954). The principal characteristics of the formation of the Earth's crust. *Science*, 119 (No. 3090), 361-365
- Jiang, S. He, M. Yue, W. Qi, B. & Liu, J. (2007). Observation of ^3He and ^3H in the volcanic crater lakes: possible evidence for natural nuclear fusion in deep Earth. In *8th International Workshop on Anomalies in Hydrogen/Deuterium Loaded Metals, Sicily, Italy: Citeseer*.
- Ji'an S. Mingguo Z. Lüqiao Z. Daming L. (2004). Identification of Five Stages of Dike Swarms in the Shanxi-Hebei-Inner Mongolia Border Area and Its Tectonic Implications. *Acta Geologica Sinica – English Edition*, 78, 320-330.
- Johnson, A. (2019). *The Earth... but not as We Know It*.

The Hidden History of Earth Expansion

- Johnson, B.D. Powell, C. McA. and Veevers. J.J. (1980). Early spreading history of the Indian Ocean between India and Australia. *Earth and Planetary Science Letters* . 47, 131-143.
- Johnson, M.R.W. (2002). Shortening budgets and the role of continental subduction during the India-Asia collision. *Earth Science Review*. 59, 101-123.
- Jones, S. & Ellsworth, J. (2003). Geo-fusion and cold nucleosynthesis in tenth international conference on cold fusion. Cambridge, MA: LENR-CANR. org.
- Jordan, P. (1966). *Die Expansion der Erde*. Vieweg, Braunschweig, 182p.
- Jordan, P. (1973). *The expanding earth. The Physicist's Conception of Nature*.
- Kahle, C.F. (1974). *Plate Tectonics—Assessments and Reassessments*. American Association of Petroleum Geologists. SBN-10: 0891812997. ISBN (electronic): 9781629812182.
- Karna Lidmar-Bergström, Mats Olvmo & Johan M. Bonow (2017). The South Swedish Dome: a key structure for identification of peneplains and conclusions on Phanerozoic tectonics of an ancient shield, *GFF*, DOI: 10.1080/11035897.2017.1364293.
- Kasting, J. F. & Howard, M. T. (2006). Atmospheric composition and climate on the early earth. *Philosophical Transactions of the Royal Society B: Biological Sciences*, 361(1474), 1733–1742.
- Ketner, K.B. (2012). An alternative hypothesis for the mid- Paleozoic Antler orogeny in Nevada. *USGS, Prof. Paper 1790*, 11p.
- Khan, Z.A. and Tewari, R.C. (2016). The concept of Gondwanaland and Pangaea- A appraisal: *Journal of Applied Geology and Geophysics*, v.4, p.44-56. doi: 10.9790/0990-0403024456.
- Khan, Z.A. and Tewari, R.C. (2017). Problems in accepting Plate Tectonics and subduction as a mechanism of Himalayan evolution. *Jour. Applied Geology and Geophysics*. 5, 81-100.
- Khan, Z.A. and Tewari, R.C. (2018). Indus-Yarlung Tsangpo Suture zone concept- A second opinion. *Jour. Tethys*, 5, 218-239.
- Kiessling, W. Flügel, E. Golonka, J. (1999). Paleoreef maps: Evaluation of a comprehensive database on Phanerozoic reefs. *AAPG Bulletin*, 83/10, 1552-1587.
- King, L.C. (1983). *Wandering Continents and Spreading Sea Floors on an Expanding Earth*. Wiley, Chichester, pp. 232.

References

- Keindl, J. (1940) Dehnt sich die Erde aus? Eine geologische Studie. (Is the Earth expanding? A geological study.), Herold-Verlag Dr. Franz Wetzel & Co., Munchen-Sollin, pp.50.
- Klootwijk, C.T. (1986). Greater India's margin: Paleomagnetic evidence for large-scale continental subduction, In: K.G. McKenzie (Ed).Shallow Tethys 2. A. A. Balkema, Rotterdam, 529.
- Kokus, M. (2004). Alternate theory of gravity and geology in seismic prediction. In New Concepts in Global Tectonics; Urbino Workshop 29-31 Aug. Italy.
- Kort, L. (1949). Das Wachen der Earth und die Wanderung der Kontinente. Buchdruckerei, Hannover, pp. 53.
- Koziar, J. (1980). Ekspansja den oceanicznych I jej zwiazek z hipotaza ekspansji Ziemi. Sprawozdania Wroclawskiego Towarzystwa Naukowego, 35, 13-19. [Expansion of the ocean floors and its connection with the hypothesis of the expanding Earth. Reports of the Wroclaw Scientific Society, vol. 35B. Ossolineum, Wroclaw, pp. 13–19.]
- Koziar, J. (1985). Rozwój oceanów jako przejaw ekspansji Ziemi. Geologia nr 8. Uniwersytet Slaski, Katowice, s. 109–114. [Development of the oceans as a manifestation of Earth's expansion. Geology no. 8. The Silesian University, Katowice, pp. 109–114.]
- Koziar, J. (1991). Prace nad problemami ekspansji Ziemi w ocerodku wroclawskim. Acta Universitatis Wratislaviensis, nr 1375, s. 110–156. [Research on the Expanding Earth in the Wrocław scientific community. Acta Universitatis Wratislaviensis, no. 1375, pp. 110–156.]
- Koziar, J. (1991). Nowa rekonstrukcja Gondwany na ekspanduj¹cej Ziemi, na tle rekonstrukcji dotychczasowych. Acta Universitatis Wratislaviensis, nr 1375, s. 357–396. [A new reconstruction of Gondwana on the expanding Earth. Acta Universitatis Wratislaviensis, no. 1375, pp. 357–396.]
- Koziar, J. (1993). Rozwój Pacyfiku i jego znaczenie dla współczesnej geotektoniki. W: J. Skoczylas (red.), Streszczenia referatów, tom II. Polskie Towarzystwo Geologiczne – Oddział w Poznaniu i Instytut Geologii Uniwersytetu im. Adama Mickiewicza w Poznaniu, Poznań, s. 45–56. [Development of the Pacific and its significance to the contemporary geotectonics. (The expanding Pacific). In: J. Skoczylas (ed). Lecture summaries. vol. II. The Polish Geological Society – Poznań Branch and the Institute of Geology of the Adam Mickiewicz University in Poznań, Poznań, pp. 45–56.]

The Hidden History of Earth Expansion

- Koziar, J. (1994). Principles of plate movements on the expanding Earth. In: *Frontiers of Fundamental Physics*. Eds. M. Barone & F. Selleri. Plenum Press. New York & London: 301 - 307.
- Koziar, J. (2003). Tensional development of active continental margins. In: K. H. Jacob (ed.), *Materials of the International Conference „Erdexpansion – eine Theorie auf dem Prüfstand“* (24–25 May, 2003, Ostbayern Schloss Theuern (Germany). Technische Universität, Berlin, pp. 27–35.
- Koziar, J. (2005). Tensyjny rozwój orogénów sródladowych. Czêsc I, Mechanizm. W: J. Skoczylas (red.), *Streszczenia referatów, tom XIV*. Polskie Towarzystwo Geologiczne – Oddział w Poznaniu i Instytut Geologii Uniwersytetu im. Adama Mickiewicza w Poznaniu, Poznań, s. 131–156. [Tensional development of intracontinental fold belts. Part I, Mechanism. In: J. Skoczylas (ed.), *Lecture summaries, vol. XIV*. The Polish Geological Society – Poznań Branch and the Institute of Geology of the Adam Mickiewicz University in Poznań, Poznań, pp. 131–156.]
- Koziar, J. (2005). Tensyjny rozwój orogénów óródrladowych. Czêsc II, Przykłady regionalne. W: J. Skoczylas (red.), *Streszczenia referatów, tom XIV*. Polskie Towarzystwo Geologiczne – Oddział w Poznaniu i Instytut Geologii Uniwersytetu im. Adama Mickiewicza w Poznaniu, Poznań, s. 157–196. [Tensional development of intracontinental fold belts. Part II, Global examples. In: J. Skoczylas (ed.), *Lecture summaries, vol. XIV*. The Polish Geological Society – Poznań Branch and the Institute of Geology of the Adam Mickiewicz University in Poznań, Poznań, pp. 157–196.]
- Koziar, J. (2006). Terrany, czyli geologia w krainie duchów. W: J. Skoczylas (red.), *Streszczenia referatów, tom XV*. Polskie Towarzystwo Geologiczne – Oddział w Poznaniu i Instytut Geologii Uniwersytetu im. Adama Mickiewicza w Poznaniu, Poznań, s. 47–98. [Terranes: or geology in a phantoms world. In: J. Skoczylas (ed.), *Lecture summaries, vol. XV*. The Polish Geological Society – Poznań Branch and the Institute of Geology of the Adam Mickiewicz University in Poznań, Poznań, pp. 47–98.]
- Koziar, J. (2007). Tensional origin of the inversion in the Polish Basin with reference to tensional development of the Bohemian Massif. Extended abstract. In: B. Kontny, V. Schenk (eds.), *Abstracts of the 8th Czech – Polish Workshop „On Recent Geodynamics of the Sudety Mts. and Adjacent Areas“* (Kłodzko, Poland, 29–31 March, 2007). Wrocław University of Environmental and Life Sciences, Wrocław, pp. 17–21.

References

- Koziar, J. (2011). Shortening of the Length of Day (LOD) Caused by Big Tsunami Earthquakes on the Expanding Earth (extended abstract). In: S. Cwojdziniński, G. Scalera (eds.), Pre-Conference Extended Abstracts Book of the 37th Course of the International School of Geophysics. Interdisciplinary Workshop on "The Earth Expansion Evidence: A challenge for Geology, Geophysics and Astronomy." (Ettore Majorana Foundation and Centre for Scientific Culture, Erice, Sicily, 4–9 October, 2011). Istituto Nazionale di Geofisica e Vulcanologia, Rome, pp. 55–58.
- Koziar, J. (2012). Expanding Earth and Space Geodesy. Society of Geologist Alumni of Wroclaw University. Wroclaw 2018.
- Koziar, J. (2018). Falsification of the Eulerian motions of lithospheric plates. Circularity of the plate tectonics theory. LAP LAMBERT Academic Publishing.
- Koziar, J. (2018). Geological proofs of significant expansion of the Earth and its broader scientific context. Association of Geologist Alumni of Wroclaw University, Wroclaw, PL. ISBN 978-83-950414-1-9.
- Koziar, J., Jamrozik, L. (1985). Application of the tension–gravitational model of the tectogenesis to the Carpathian orogen reconstruction. In: Proceeding reports of the XIIIth Congress of the Carpatho – Balkan Geological Association (Cracow, Poland, 5–10 September, 1985), part I. Polish Geological Institute, Cracow, pp. 200
- Koziar, J., Jamrozik, L. (1994). Tension–gravitational model of island arcs. In: F. Selli, M. Barone (eds.), Proceedings of the International Conference "Frontiers of Fundamental Physics" (Olympia, Greece, 27–30 September, 1993). Plenum Press, New York and London, pp. 335–337.
- Koziar, J., Muszyński, A. (1980). Spostavki mežu ekstenzjonnoto rozvitije na Srediziemno i Ėerno morje. Spisanje na Blgarskoto Geologiĉesko Družestvo, god. XLI, kn. 3, s. 247–259. [Correlations of extensional development of the Mediterranean and the Black Sea. Review of the Bulgarian Geological Society, vol. 41, no. 3, pp. 247–259.]
- Krause, D.W. and 4 others. (1997). Cosmopolitanism among Gondwanian Late Cretaceous mammals. *Nature*, 390, 178–208.
- Krouss, L. (2014). A Beacon from the Big Bang. *Scientific American* 4, 311.59-67.
- Krug, H.-J., Dietrich, S., Jacob, K.-H. (1994). The formation and fragmentation of periodic bands through precipitation and Ostwald ripening. In: *Fractals and Dynamic Systems in Geosciences* (Ed.: J.H. Kruhl), Springer, 269-289.

The Hidden History of Earth Expansion

- Kuhn, T. (1970). *The structure of scientific revolutions*. University of Chicago press, 2nd ed edition.
- Kundt, W. (1998). *The Gold effect: Odyssey of scientific research*. arXiv:astro-ph/9810059v1, 54 S.
- Larson R.L. Pitman W.C. (III), Golovchenko X. Cande S.C. Dewey J.F. Haxby W.F. & LaBrecque (mapcompilers) (1985). *The Bedrock Geology of the World*. Freeman & Co. New York.
- Lay, T. Hernlund, J. Buffett, A.B. (2008). Core–mantle boundary heat flow. In *Nature Geoscience*, No. 1, p. 25-32.
- Laya-Pereira, J.C. (2012). *Permian carbonates in the Venezuelan Andes*. Doctoral Thesis, Durham Univ. 330p.
- Leclerc, G-L. (1751). *Theory of the Earth*.
- Le Grand, H.E. (1988). *Drifting Continents and Shifting Theories*. Cambridge University Press.
- Le Pichon, X. (1968). See-floor spreading and continental drift. *J.Geophys.Res.* 73, 12:3661 - 3697.
- Le Pichon, X. (2001). *My Conversion to Plate Tectonics*. In Oreskes, N. (editor), Le Grand, H.E. (2001). *Plate tectonics: An insider's history of the modern theory of the Earth*. Westview Press.
- Lerner, E. (1992). *The Big Bang never happened*. Vintage Books, New York.
- Lewis, C. (2000). *The Dating Game: One Man's Search for the Age of the Earth*, Cambridge University Press, ISBN 0-521-89312-7
- Leyton, M. Monroe, J. (2017). *The Source for Up to Half of Earth's Internal Heat Is Unknown*. Web: https://www.realclearscience.com/articles/2017/08/05/the_source_for_up_to_half_of_earths_internal_heat_is_unknown.html
- Liang Rixuan, Bai Wanji. (1984). *Genesis of ultramafic rocks in Yarlu-Zhangbo ophiolite belt*. *International Symposium Geology Himalaya*, 1, 117-118 (Abstract).
- Lindemann, B. (1927). *Kettengebirge, Kontinentale Zerspaltung und Erdexpansion*. Gustav Fischer Publishers, Jena. 186p.
- Love, J.J. Thomas, J.N. (2013). *Insignificant solar-terrestrial triggering of earthquakes*. *Geophysical Research Letters*. Vol.40, is. 6:1165-1170.
- Lovelock, J.E. (1979). *Gaia: A new look at life on Earth*. Oxford University Press, Oxford, 176 pp.
- Low, F. S. Kristna, S. (1970). *Narrow bond infrared photometry of alfactory*. *Nature*: 3. 23. 13-22.

References

- Lyell, C. (1830). *Principles of Geology: being an attempt to explain the former changes of the Earth's surface, by reference to causes now in operation. Part I.*
- Managadze, G.G., Cherepin, V.T., Shkuratovm Y.G., Kolesnik, V.N., Chumikov, A.E. (2011). Simulating OH/H₂O formation by solar wind at the lunar surface, *Icarus* 215, 449–451.
- Mardfar - See Amirmardfar.
- Makarenko G.F. (1983). *Volcanic Seas on Earth and Moon.* (In Russian), (Moscow, Izdatel's tvo Nedra.
- Marvin, D. (2018). *The Expanding Earth and the Implications on the Geophysics of Earth.* 44p.
- Marvin, J.H. (2003). *The Nuclear Heart of the Earth.* Interview at: <http://www.spacedaily.com/news/earth-03k.html>.
- Marvin, J.H. (2014). *Herdon's Earth and the Dark Side of Science; Perface at:* http://nuclearplanet.com/Herdon's_Earth%20.html.
- Molnar, P. Tapponnier, P. (1975). Cenozoic tectonics of Asia: effects of a continental collision: *Science*, 189, 419-426.
- Manuel K. Oliver (2009). *Earth's Heat Source, the Sun. At: Energy & Environment* 20131-144.
<https://arxiv.org/ftp/arxiv/papers/0905/0905.0704.pdf>.
- Mareschal, J-C. et al. (2012). Geoneutrinos and the energy budget of the Earth. *Journal of Geodynamics*, Vol. 54, p. 43– 54.
- Maxlow, J. (1995). *Global Expansion Tectonics: The geological implications of an expanding Earth.* Unpublished Master of Science thesis, Curtin University of Technology, Perth, Western Australia.
- Maxlow, J. (2001). *Quantification of an Archaean to Recent Earth Expansion Process Using Global Geological and Geophysical Data Sets.* PhD thesis, Curtin University of Technology, Western Australia.
- Maxlow, J. (2002). *Quantification of an Archaean to recent Earth Expansion Process using Global Geological and Geophysical Data Sets.* Unpublished PhD thesis, Curtin University of Technology, Perth, Western Australia.
- Maxlow, J. (2003). *Quantification of an Archaean to Recent Earth expansion process.* In Scalera, G and Jacob, K-H. (Editors) 2003. *Why Expanding Earth? A book in honour of Ott. Christoph Hilgenberg.* INGV publisher Roma. 335-349.
- Maxlow, J. (2005). *Terra non firma Earth: Plate Tectonics is a myth.* Terrella Press.

The Hidden History of Earth Expansion

- Maxlow, J. (2014). *On the Origin of Continents and Oceans: A Paradigm Shift in Understanding*. Perth, Western Australia: Terrella Press.
- Maxlow, J. (2015). *Expansion Tectonics: A Complimentary Download*. Terrella Press, 114p.
- Maxlow, J. (2018). *Beyond Plate Tectonics: Unsettling settled science*. Aracne Editrice, Roma. www.aracneeditrice.it
- McCarthy, D. (2003). The trans-pacific zipper effect: disjunct sister taxa and matching geological outlines that link the pacific margins. *Journal of Biogeography*, 30(10), 1545–1561. <https://doi.org/10.1046/j.1365-2699.2003.00929.x>
- McCarthy, D. (2011). *Here be dragons: how the study of animal and plant distributions revolutionized our views of life and Earth*. OUP Oxford.
- McElhinny M.W. Lock J. (1996). IAGA paleomagnetic databases with Access. *Surveys in Geophysics*, 17, 575-591.
- McKenzie, D.P. (1977). Plate Tectonics and Its Relationship to the Evolution of Ideas in the Geological Sciences, *Daedalus* Vol. 106 No. 3, 97-124.
- Menard, H.W. (1986). *The Ocean of Truth: A Personal History of Global Tectonics*. Princeton University Press.
- Meservey, R. (1969). Topological inconsistency of continental drift in the present-sized earth. *Science*.
- Meyerhoff, A.A., Tanner, I., Morris A.E.L., Martin, B.D., Agocs, W.B., Meyerhoff, H.A. (1992). Surge tectonics: a new hypothesis of Earth dynamics. In: Chatterjee, S. and Hotton, N. (eds.): *New Concepts in Global Tectonics*. Texas Tech. University Press, Lubbock, 309-409.
- Meyerhoff, A.A. (1995). Surge-tectonic evolution of southeastern Asia: A geohydro-dynamics approach. *Jour. Southeast Asian Earth Sciences*, 12, 143-247.
- Meyerhoff, A.A., Boucot, A.J., Meyerhoff, H.D., Dickins, J.M. (1996). Phanerozoic faunal and floral realms of the Earth: The intercalary relations of the Malvinokaffric and Gondwana faunal realm with the Tethyan faunal realm. *Mem Geological Society of America* No. 189.
- Miller, E.L. Kuznetsov, N. Soboleva, A. Udoratina, O. Grove, M.J. Gehrels, G. (2011). Baltica in the Cordillera? *Geology*, 39/8, 791-794. Doi: 10.1130/G31910.1.
- Mizuno, T. (1998). *Nuclear transmutation: the reality of cold fusion*. Infinite Energy Press Concord.

References

- Molnar, P. (2007). An examination of evidence used to infer late Cenozoic “Uplift” of mountain belts and other high terrain: What scientific question does such evidence pose? *Journal of the Geological Society of India*, 70, 395-410.
- Moore, E.M. (1991). Southwest U.S.—East Antarctic (SWEAT) connection: A hypothesis. *Geology* 19, 425-428.
- Moore, E.M., Kellogg, L.H. and Dilek, Y. (2000). Tethyan Ophiolites, mantle convection and tectonic historical contingency: A resolution of the ophiolite conundrum. *GSA. Inc. Special Paper #349 in Ophiolites and Oceanic Crust: New Insight from the Field Studies and the Drilling Program*, 349, 3-12.
- Myers, L.S. (2004). Earth expanding rapidly by external accretion expansion. In *Urbino Workshop 29-31 August*.
- Myers, L.S. (2008). A growing and expanding Earth is no longer questionable. (Washington, D.C.: American Geophysical Union, Spring Meeting, . 26a. Myers).
- Myers, L.S. (2015). *Gravity: The Source of Earth’s Water*. Page Publishing Inc. ISBN-13: 978-1682137116.
- Najman, Y. and 9 others. (2010). Timing of India-Asia collision: geological, biostratigraphic and paleomagnetic constraints. *Jour. Geophys. Research*, 115, 1978-2012.
- Neuendorf, K.K.E., Mehl Jr, J.P., Jackson, J.A. (Editors) (2011). *Glossary of Geology (Fifth Edition), Revised*, American Geosciences Institute, Alexandria, Virginia.
- Neiman, V.B., 1962: *Razsirjajuscajasja Zemlja (The expanding Earth)*. Gosudarstvennoje Izdatelstwo Geograficeskoj Literatury, Moskwa.
- Nicolas, A., Bouchez, J.L., Blaise, J., Poirier, J.P. (1977). Geological aspects of deformation in continental shear zones. *Tectonophys.* 42, 55-73.
- Nicolas, A., Poirier, J. P. (1976): *Crystalline Plasticity and Solid State Flow in Metamorphic Rocks*. J. Wiley & Sons, London, 444p.
- Nicolis, G., Prigogine, I. (1987). *Die Erforschung des Komplexen*. Piper, München, Zürich, 384 pp.
- Noel, D. (1986). Nut tree distributions and the expansion of the Earth. [http:// wayback.archive-it.org/1941/20100524190351/http://www.wanatca.org.au/Q-Yearbook/Y11all.pdf](http://wayback.archive-it.org/1941/20100524190351/http://www.wanatca.org.au/Q-Yearbook/Y11all.pdf)
- Noel, D. (1989). *Nuteeriat: nut trees, the expanding Earth, Rottneest Island, and all that—*. Published for the Planetary Development Group, Tree Crops Centre by Cornucopia Press. Reprint available from

The Hidden History of Earth Expansion

- Amazon, <https://www.amazon.com/Nuteeriat-Expanding-Rottnest-Island-P-Book/dp/1982976624/>
- Noel, D. (2012). Inside The Earth -- The Heartfire Model. <http://www.aoi.com.au/bcw/Heartfire/index.htm>
- Noel, D. (2013). Inside the Earth -- The Heartfire Model. <http://www.aoi.com.au/bcw/Heartfire/index.htm>
- Noel, D. (2017a). EP302: The Earth-Expansion Model Part A --The Death of Plate Tectonics. <http://www.aoi.com.au/EP/EP302.htm>. [A revision of “Fixed-Earth and Expanding-Earth Theories -- Time for a Paradigm Shift?” <<http://www.aoi.com.au/bcw/FixedorExpandingEarth.htm>> 2004.]
- Noel, D. (2017b). EP303: The Earth-Expansion Model Part B -- Answers to A Hundred Puzzles. <http://www.aoi.com.au/EP/EP303.htm> [A revision of “Fixed-Earth and Expanding-Earth Theories -- Time for a Paradigm Shift?” <<http://www.aoi.com.au/bcw/FixedorExpandingEarth.htm>> 2004.]
- Noel, D. (2017c). XT807: The Concore Model of planet and star interiors. <http://www.aoi.com.au/Extracts/XT807.htm> [An extract from Inside “The Earth -- The Heartfire Model”. ref. 9, 2012]
- Norin, E. (1946). Geological expedition in Western Tibet: Report Sino-Swedish Expedition, Stockholm, 1-229.
- Nutman, A.P. Clark R.L. Friend C.R.L. Bennett V.C. McGregor V.C. (2004). Dating of the Ameralik dyke swarms of the Nuuk district, southern West Greenland: mafic intrusion events starting from c. 3510 Ma. *Journal of the Geological Society*, 161, 421-430; DOI: 10.1144/0016-764903-043.
- Ogrisseg, J. (2009). Dogmas may blinker mainstream scientific thinking. <https://www.japantimes.co.jp/life/2009/11/22/life/dogmas-may-blinker-mainstream-scientific-thinking/>
- Ollier, C.D. (1969). ‘Weathering’, Oliver & Boyd, Edinburgh, 304.
- Ollier, C.D. (1981). *Tectonics and Landforms*, Longman, Harlow, 324.
- Ollier, C.D. (2002). The structure and origin of mountains: Pre-planation and post-planation gravity structures. in Dramis F. Farabollini P. Molin P. (Eds.) Large-scale vertical movements and related gravitational processes. In: Proc. International Workshop, Camerino-Roma 21-26 June 1999, Studi Geologici Camerti, Numero Speciale; pp.147- 155, Edimond,
- Ollier, C.D. (2003). The origin of mountains on an expanding Earth, and other hypotheses. In Scalera,G. & Jaob, H. (eds) *Why Expanding Earth*. 129 – 160 . INGV Publisher, Rome.

References

- Ollier, C.D. (2004). The evolution of mountains on passive continental margins. 59 – 88 In: Slaymaker, O. and Owens, P. (eds.): *Mountain Geomorphology*. Edward Arnold, London, Città di Castello (Italy).
- Ollier, C.D. (2006). A plate tectonics failure: the geological cycle and conservation of continents and oceans. *Annals of Geophysics*, Supplement to Vol. 49, N. 1, Chapter 8, 427-436.
- Ollier, C.D. (2007). Exceptional planets and moons, and theories of the expanding Earth. *New Concepts in Global Tectonics*, 45, 52-54.
- Ollier, C.D. (2012a). Dykes, crustal extension and global tectonics. In Scalera, G. Boschi, E. and Cwojdzinski (eds.) *The Earth Expansion Evidence – a challenge for Geology, Geophysics and Astronomy. Selected Contributions to the Interdisciplinary Workshop of the 37th International School of Geophysics EMFCSC, Erice (4-9 October 2011)*, 207 – 304.
- Ollier, C.D. (2012b). Extension everywhere: rifts, continental margins and island arcs. In Scalera, G. Boschi, E. and Cwojdzinski (eds.) *In The Earth Expansion Evidence—a challenge for Geology, Geophysics and Astronomy. Selected Contributions to the Interdisciplinary Workshop of the 37th International School of Geophysics EMFCSC, Erice (4-9 October 2011)*, 61 – 76.
- Ollier, C.D., Koziar, J. (2007). Dlaczego cykle geologiczne tektoniki p³yt nie sprawdzaj¹ się? *Przeł¹d Geologiczny*, tom 55, nr 5, s. 375–382. [Why the plate tectonics rock cycles do not work? *Geological Review*, vol. 55, no. 5, pp. 375–382.]
- Ollier, C.D. Pain, C.F. (2000). *The Origin of Mountains*, Routledge, London.
- Ollier, C.D. Pain C.F. (2019). Neotectonic mountain uplift and geomorphology. *Geomorfologiya*. 2019;(4):3-26. <https://doi.org/10.31857/S0435-4281201943-26>.
- Öpik, E. (1971). Cratering and the moon's surface. In *Advances in Astronomy and Astrophysics*. Elsevier, vol. 8, pp. 107–337.
- Oreskes, N. (1989). *The Rejection of Continental Drift: Theory and Method in American Earth Science*.
- Oreskes, N. (editor), Le Grand, H.E. (2002). *Plate tectonics: An insider's history of the modern theory of the Earth*. Westview Press.
- Orlando, T.M., Jones, B.M., Aleksandrov, A.B., Hibbits, C.A., Dyar, M.D. (2018). A Solar Wind Source of Water in the Polar Regions of the Moon? *Lunar Polar Volatiles 2018 (LPI Contrib. No. 2087)*.
- Orlenok, V. (2010). *Global volcanism and oceanization of the Earth and planets*. Kaliningrad: I.Kant State University of Russia Press, 167.

The Hidden History of Earth Expansion

- Ortoleva, P. (1984). *Geochemical Self-Organization*. Oxford Monogr. Geol. Geophys., 23, 411 pp.
- Owen, H.G. (1976). Continental displacement and expansion of the Earth during the Mesozoic and Cenozoic. *Philosophical Transactions of the Royal Society of London*. A 281, 223-291.
- Owen, H.G. (1983). *Atlas of continental displacement 200 million years to the Present*. Cambridge Earth Sciences Series. Cambridge University Press. i-x, 1-159, 76 maps.
- Owen, H.G. (1984). The Earth Is Expanding and We Don't Know Why. In *New Scientist*, No. 22, Nov. 22, 1984. 27-
- Owen, H.G. (1996). Boreal and Tethyan late Aptian to late Albian ammonite zonation and Palaeobiogeography. *Mitteilungen aus dem Geologisch-Paläontologischen Institut der Universität Hamburg*. 77, 461-481.
- Owen, H.G. (2012). Earth expansion - Some Mistakes, What Happened in the Palaeozoic and the Way Ahead. In Scalera G. Boschi, E. and Cwojdzinski, S Editors. *The Earth Expansion Evidence – A challenge for Geology, Geophysics and Astronomy Erice, Sicily, 4-9 October 2012*, 77-89.
- Owen, L.A. (2004). Cenozoic evolution of global mountain systems. 132 – 152 In: Slaymaker, O. and Owens, P. (eds.): *Mountain Geomorphology*. Edward Arnold, London.
- Patriat, F., Achache, J. (1984). The Indian-Eurasian collision. A synthesis of oceanic magnetic anomalies and the comparison with continental paleomagnetic studies. *International Symposium Geology Himalayas*, 2, 14 (abstract).
- Peale, J.S. (1999). Origin and Evolution of the Natural Satelits. *Annu. Rev. Astron. Astrophys.* 37:533–602.
- Peishong, Bao and Wang Xibin. (1984). The two suites of volcanic in the Yarlung-Zhangbo River ophiolite belt - a discussion on the emplacement mechanism of ophiolites. *International Symposium Geology Himalaya 1*, 103-105 (Abstract).
- Pfeuffer, J. (1981). *Die Gebirgsbildungsprozesse als Folge der Expansion der Erde*. Glückauf, Essen, 125 pp.
- Pisarevsky, S. (2005). *Global Paleomagnetic Database (GPMDB V 4.6)*. Tectonics Special Research Centre of the University of Western Australia Web site (<http://www.tsrc.uwa.edu.au/>).
- Pitcher, W.S. Atherton, M.P. Cobbing, E.J. Beckinsale, R.D. (1985). *Magmatism at a Plate Edge*. Blackie, Halstead Press, Glasgow, 328p.
- Playfair, J. (1802). *Illustrations of the Huttonian Theory of the Earth*.

References

- Poirier, J.P. (1976). Crystalline Plasticity and Solid State Flow in Metamorphic Rocks. J. Wiley & Sons, London, 444p.
- Popper, K. (1963). Science as falsification. In *The Growth of Scientific Knowledge* (pp. 33–39). London: Routledge.
- Prasad, G. R. Verma, O. Flynn, J.J. and Goswami, A. (2013). A late Cretaceous vertebrate fauna from the Cauvery basin, South India: Implications for Gondwanian paleogeography. *Jour. Vertebrate Paleontology*, 33, 1260-1268.
- Pratt, D. (2000). Plate Tectonics: A paradigm under threat. *Jour. Scientific Exploration*. 14, 307-352.
- Priestley, J. (1767). *The History and Present State of Electricity*. London.
- Puchkov, V.N. (2009). The evolution of the Uralian orogen. (London: Geological Society, Special publication, V. 327, 2009), 161-195. DOI: 10.1144/SP327.9.
- Rage, J.C. (2003). Relationships of the Malagasy fauna during the Late Cretaceous: Northern of southern routes? *ActaPaleontologicaPolonica*, 48, 661-662.
- Rage, J.C. (2016). Gondwana, Tethys and terrestrial vertebrates during Mesozoic and Cenozoic. In: *Gondwana and Tethys*. M.G. Audrey-Charles and A. Hallam (Eds.). Geological Society of America Special publication 37, 255-273.
- Raiverman, V. (1992). Trans-Asiatic lineaments and Himalayan orogeny, In: A. K. Sinha (Ed). *Himalayan Orogen and global tectonics*: Oxford & IBH. Publication, New Delhi, 121-156.
- Raiverman, V. (2002). Foreland sedimentation in Himalayan tectonic regime: A relook at the Orogenic process: B.S. M. P.S. Publ, New Delhi, 1- 378.
- Rattliffe, H. (2017). A review of Anomalous Redshif Data. In: *The Galileo of Polmar*. Essay in memory of Alton Arp edited by Christofer C. Fulton and Martin Cocus.
- Reading, H.G. (1980). Characteristics and recognition of strike-slip fault systems. In: *Sedimentation in Oblique-Slip Mobile Zones* (Eds. P.F. Balance, H.G. Reading), Internat. Assoc. Sedimentol. Spec. Publ. 4, 7-26.
- Reich, W. (1945/1982). *The Bioelectrical Investigation of Sexuality and Anxiety*. Farrar, Straus and Giroux, New York, xi + 161 pp.
- Reich, W. (1949/1951/1973). *Ether, God and Devil/Cosmic Superimposition*. Farrar, Straus and Giroux, New York, 308 pp.

The Hidden History of Earth Expansion

- Reston, T. (2007). Extension discrepancy at North Atlantic nonvolcanic rifted margins: Depth-dependent stretching or unrecognized faulting? *Geology* 35, 367-370.
- Rickard, M.J. (1969) Relief of curvature on expansion - a possible mechanism of geosynclinal formation and orogenesis. *Tectonophysics* 8(2): 129 - 144.
- Reitan, P.H. (1968a). Frictional heat during metamorphism: quantitative evaluation of concentration of heat generation in time. *Lithos*, 1, 151-163.
- Reitan, P.H. (1968b). Frictional heat during metamorphism: quantitative evaluation of concentration of heat generation in space. *Lithos*, 1, 268-274.
- Reitan, P.H. (1988). Global dynamics and the temperatures of metamorphism. *Bull. Geol. Inst. Univ. Uppsala, N.S.* 14, 21-24.
- Rogers, (1985). Quote given in Carey (1988).
- Romanowicz, B., Gung, Y. (2002). Superplumes from the Core-Mantle Boundary to the Lithosphere: Implications for Heat Flux." *Science* 96.5567. (Stanford, CA: Highwire Press, 2002).513-516. DOI: 10.1126/science.1069404.
- Romans, B. (2008). Subduction Denialism, Part 1: The Backstory. <https://clasticdetritus.com/2008/11/14/subduction-denialism-part-1-the-backstory/>
- Roques, M. (1941). Les schistes cristallins de la partie sud-ouest du Massif Central Français. *Mém. Serv. Carte géol. France*, 512p.
- Rubin, V.C. (1988). Dark matter in the universe. *Proceedings of the American Philosophical Society*, vol. 132, no. 3, pp. 258–267.
- Runcorn, S.K. (Ed.). (1962). *Continental drift*. Elsevier.
- Runcorn, S.K. (Ed.). (1969). *The Application of the Modern Physics to The Earth and Planetary Interiors*. (N.A.T.O. Advanced Study Institute)
- Rust, J. and 15 Others. (2010). Biogeographic and evolutionary implications of a diverse paleobiota in amber from the early Eocene of India. *Proc. National Academy Science*, 107, 18360-18365.
- Sarwar, G. and Khalil, Y.S. (2017). The saga of India's drift and supra-subduction origin of the ophiolites on its northwestern margin, Pakistan. *New Concepts in Global Tectonics Journal*. 5, 27-47.
- Scalera, G. (2003). Samuel Warren Carey. Commemorative memoir. In Scalera, G. and Jacob, K-H., (Editors) 2003. *Why Expanding Earth? A book in honour of Ott Christoph Hilgenberg*. *Proceedings of the 3rd Lautenthaler Montanistisches Colloquium*, Mining Industry Museum,

References

- Lautenthal (Germany) May 26, 2001 (INGV Publication, Rome), 85-95.
- Scalera G. (2003). The expanding Earth: a sound idea for the new millennium. In: G. Scalera and K.-H. Jacob (eds.): *Why Expanding Earth? – A book in Honour of Ott Christoph Hilgenberg*. Proceedings of the 3rd Lautenthaler Montanistisches Colloquium, Mining Industry Museum, Lautenthal (Germany) May 26, 2001 (INGV Publication, Rome), 181-232.
- Scalera, G. (2003). Bibliographical sources for the expanding Earth. In: G. Scalera and K.-H. Jacob (eds.): *Why Expanding Earth? – A book in Honour of Ott Christoph Hilgenberg*. Proceedings of the 3rd Lautenthaler Montanistisches Colloquium, Mining Industry Museum, Lautenthal (Germany) May 26, 2001 (INGV Publication, Rome).
- Scalera, G. (2006). The Mediterranean as a slowly nascent ocean. *Annals of Geophysics, Supplement to V. 49, No. 1*, 451-482.
- Scalera, G. (2008). Great and old earthquakes against great and old paradigms – paradoxes, historical roots, alternative answers. *Advances in Geosciences*, 14, 41-57.
- Scalera, G. (2009). Mantovani and his ideas on the expanding Earth, as revealed by his correspondence and manuscripts. *Annals of Geophysics*, 52(6), 615-648.
- Scalera, G. (2011). South American volcanoes and great earthquakes. Article Cwojdzinski. Rome, (2012), 492.
- Scalera, G. (2011). The Earth Expansion Evidence, A challenge for geology, geophysics and astronomy. Contribution to the Interdisciplinary Workshop, held in Erice, Sicily, Italy (4-9 October 2011). Post-conference publication edited by Giancarlo Scalera (editor in chief), Enzo Boschi, and Stefan Cwojdzinski. Rome (2012), 492.
- Scalera, G. (2013). The vague volcano-seismic clock of the South American Pacific margin. *Advances in Geosciences*, 35, 89-103.
- Scalera G., Braun, T. (2003). Ott. Christoph Hilgenberg in twentieth century Geophysics. In Scalera, G and Jacob, K.-H., (Editors) 2003. *Why Expanding Earth? A book in honour of Ott Christoph Hilgenberg*. INGV publisher Roma. 25-41.
- Scalera, G., Jacob, K.-H., (Editors) (2003). *Why Expanding Earth? A book in honour of Ott Christoph Hilgenberg*. INGV publisher Rome. 465 pp with extensive bibliography.
- Scalera, G. (editor in chief): Hilgenberg, O. C. (2003/1933/1939) Formation and development of the: contraction or expansion. In Giancarlo Scalera, and Karl-Heinz Jacob (eds): *Why Expanding Earth?*

The Hidden History of Earth Expansion

- Proceedings of the Lautenthal Colloquium, held on May 26, 2001
Honour off OttChristoph Hilgenberg. INGV, Rome 2003.
- Scalera, G., Boschi, E. and Cwojdzinski (Editors) (2012). The Earth Expansion Evidence – A challenge for Geology, Geophysics and Astronomy. Selected Contributions to the Interdisciplinary Workshop of the 37th International School of Geophysics EMFCSC, Erice (4-9 October 2011), Aracne Editrice, Rome, 494pp.
- Schaer, J.P. and Rogers, J. (1987). The Anatomy of Mountain Ranges. Princeton University Press, Princeton, N.J. pp.298.
- Sharaf, M. (1983). Fury on Earth, A Biography of Wilhelm Reich. St. Martin's Press, New York, xiii + 550 pp.
- Schirber, M. (2005). Core of a Supernova Goes Missing. At: <http://www.space.com/1168-core-supernova-missing.html>.
- Scholz, C.H. (1980). Shear heating and the state of stress on faults. *J.Geophys. Res.* 85 (No. B11), 6174-6184
- Scholz, C.H. Beavan, J. Hanks, T.C. (1979). Frictional metamorphism, argon depletion, and tectonic stress on the Alpine Fault, New Zealand. *J. Geophys. Res.* 84 (No. B12), 6770-6782
- Schwinner, R.G. (1924). Scherung, der Zentralbegriff der Tektonik. *Cbl. Miner. Geol. Paläont.* 469-479
- Sciama, W. D. (2012/1959) The unity of the Universe. Courier Corporation ISBN 0486135896 p. 256.
- Scoppola, B. Boccaletti, D. Bevis, M. Carminati, E. Doglioni, C. (2006). The westward drift of the lithosphere: A rotational drag? *Geol. Soc. Am. Bull.* 118/1-2, 199-209. Doi: 10.1130/B25734.1.
- Scotese, C.R. (1994). Paleogeographic maps. In: Klein, G. D. ed. Pangea: paleoclimate, tectonics, and sedimentation during accretion, zenith, and breakup of a supercontinent. Geological Society of America Special Paper, 288.
- Scotese, C.R. (2014). Atlas of Permo-Carboniferous Paleogeographic Maps (Mollweide Projection), Maps 53-64, Vol. 4, The Late Paleozoic, PALEOMAP Atlas for ArcGIS, PALEOMAP Project, Evanston, IL.
- Seclaman, M. (1982). Semnificatia genetica a liniatiilor minerale in sisturile cristaline din Carpatii Meridionali. *St. Cerc. Geol. Geofiz. Geogr.Ser. Geol.* 27,8-17.
- Seebeck, T.J. (1826). Über die magnetische Polarisation der Metalle und Erze durch Temperaturdifferenz. *Ann. Phys.*, 82/3, 253-286.
- Shannon, M. C. & Agee, C. B. (1998). Percolation of core melts at lower mantle conditions. *Science* 280, 1059 – 1061.

References

- Shehu, V. (1971). The age and origin of the porphyry granite of Fierza. (In Albanian).Bul.Of Sc. Tirana Univ.No 1 p 127 - 141.
- Shehu, V. (1988). Developing Earth. (In Albanian). Tirana, Albania. Sht. Bot. 8 Nëntori, 180.
- Shehu, V. (2004). The Earth, a sample of universe in our hands, according to the Earth expansion through growing and developing processes. New Concepts in Global Tectonics. Urbino Italy: Workshop, Aug. 29- 31.
- Shehu, V. (2005). The Growing and Developing Earth. No. Charleston, S.C.: BookSuege, LLC (2005), ISBN 1-4196-1963-3, USA, 218.
- Shehu, V. (2009). The Growing and Developing Earth. (In Albanian).Tiranë, Albania: Sht. Bot. Dudaj. 361.
- Shehu, V. (2012/2011). Earth Expansion through Activity of the Earth Core-Kernel as an active cosmic Object. In: The Earth Expansion Evidence, A challenge for geology, geophysics and astronomy. Selected Contributions to the Interdisciplinary Workshop, (held in Erice, Sicily, Italy 4-9 October. 2011). 243-262. Post-conference publication edited by GiacarloScalera (editor in chief), EnzoBoschi, and Stefan Cwojdzinski. 263-273. Rome.
- Shehu, V. (2016). The Earth's Core, an Energetic Cosmic Object. Printed by Create Space, An Amazom.com Company. USA 2016. 80p. <https://www.amazon.ca/Earths-Core-Energetic-Cosmic-Object/dp/1512290874>.
- Shen, W.B, et al. (2008). The expanding Earth: evidences from temporary gravity fields and space geodesic GEPH. Research Abstracts V. 10 EGU2008-A-0473.
- Shields, O. (1979). Evidence for initial opening of the Pacific Ocean in the Jurassic. Paleogeography, Paleoclimatology, Paleoecology 26, 181-220.
- Shields, O. (1997). Is plate tectonics withstanding the test of time? Annali di Geofisica, Vol XL, 1-8.
- Smiley, C.J. (1992). Plaeofloras, faunas, and continental drift: Some problem areas. In: S. Chatterjee and N. Hotton (Eds). New Concepts in Global Tectonics. Texas Tech. University Press, 241-257.
- Smith, A.G. (2006). Tethyan Ophiolite emplacement, Africa to Europe motion, and Atlantic spreading. In: The Tectonic Development of the Eastern Mediterranean Region. A.H.F. Robertson and D. Mountrakis, (Eds.). (London Geographical Society, Special Publication 260, 1-9.
- Smith, A.G. and Hallam, A. (1970). The fit of the southern continents: Nature, 225, 139-144.

The Hidden History of Earth Expansion

- Smith, A.G. Briden, J.C. and Drewry, G.E. (1973). Phanerozoic World Maps. In Hughes, N.F. *Organisms and Continents through time. Special Papers in Palaeontology*. 12, 1-43.
- Smith, A.G. Hurley, A.M and Briden, J.C. (1980). *Phanerozoic Palaeocontinental World Maps*. Cambridge University Press Earth Science Series. 107 pp.
- Smith A. G. Smith D. G. & Funnell B. M. (1994). *Atlas of Mesozoic and Cenozoic coastlines*. Cambridge University Press.
- Soja, C.M. Antoshkina, A.I. (1997). Coeval development of Silurian stromatolite reefs in Alaska and the Ural Mountains: Implications for paleogeography of the Alexander terrane. *Geology*, 25/6, 539-542.
- Spencer, E.W. (1977). *Introduction to the Structure of the Earth*. McGraw-Hill, Paperback, 640p.
- Steiner, J., (1967). The sequence of geological events and the dynamics of the Milky Way galaxy. *Jour. Geol. Soc. Australia*, 14, 99-132.
- Steiner, L. (2014). Von der alpinen Schub- zur Gleitdecke. (From Alpine thrust nappe to downsiding thrust sheet). *Z. geol. Wiss.*, 41-42, 185-196.
- Steinhorsson S., Thoraninsson S. (1997). Iceland. In: Moores E.M. and Fairbridge R.W. (eds.) *Encyclopedia of European and Asian Geology*. Chapman & Hall, London, 341-352.
- Stern and Gerya (2018) Subduction initiation in nature and models: A review, *Tectonophysics* 746, 173-198.
- Stevens, G. (1988). John Bradley: a New Zealand pioneer in continental drift studies. *Geol. Soc. New Zealand Newsletter*, No 17: 30–38. Quoted in Frankel (2012) Volume II.
- Strick, J.E. (2015). *Wilhelm Reich, Biologist*. Harvard University Press, Cambridge, MA, 487 pp.
- Stille, H. (1936). The present tectonic state of the Earth. *Bull. Am. Assoc. Petrol. Geol.* 20, 849-80.
- Storetvedt, K.M. (1997). *Our evolving planet: Earth history in a new perspective*. Alma Mater, Bergen, pp. 456.
- Storetvedt, K.M. (2010). Falling plate tectonics–rising new paradigm: salient historical facts and current tuation. *NCGT Newletter*, 55, 4-34.
- Strong, D.F. Hanmer, S.K. (1981). The leucogranites of southern Brittany: origin by faulting, frictional heating, fluid flux and fractional melting. *Can. Mineralogist*, 19, 163-176.
- Strutinski, C. (1987). Strike-slip faults – what are they really standing for? General features with exemplifications from the Romanian

References

- Carpathians. *Studia Univ. Babeş-Bolyai, Geologia-Geographia*, XXXII/2, 47-59.
- Strutinski, C. (1990). The importance of transcurrent phenomena in mountain building. In: *Critical Aspects of the Plate Tectonics Theory, Volume II* (Eds. V. Belousov et al.), Theophrastus Publ. S.A. Athens, 141-166.
- Strutinski, C. (1994). An orogenic model consistent with Earth expansion. In: *Frontiers of Fundamental Physics* (Eds. M. Barone, F. Selleri), Plenum Press, New York, 287-294.
- Strutinski, C. (1997). Causal Relations between Crustal Transcurrent Systems and Regional Metamorphism, with Reference to the Upper Proterozoic - Cambrian Formations of Central Dobrogea. Doctoral Thesis (Unpublished, in Romanian), Universitatea Bucuresti, 288p
- Strutinski, C. (2012). Contradictory aspects in the evolution of life hinting at gravitational acceleration through time. In: *The Earth Expansion Evidence. A Challenge for Geology, Geophysics and Astronomy*. (Eds.: G. Scalera, E. Boschi, S. Cwojdzinski). Selected contributions to the Interdisciplinary Workshop of the 37th International School of Geophysics EMFCSC, Erice (4-9 October 2011), Aracne Editrice, Rome, 343-364.
- Strutinski, C. (2013). Wachsende Schwerkraft – Triebfeder der Evolution? <http://www.wachsende-erde.de/web-content/bilder/strut/Strutinski-Wachsende%20Schwerkraft.pdf>
- Strutinski, C. (2015). Zwei Jahrhunderte Geologie. Von Abraham Gottlieb Werner zu Samuel Warren Carey. http://www.wachsende-erde.de/web-content/2_material6strutinski1.html
- Strutinski, C. (2016). Massenextinktionen aus Sicht der Hypothese eines wachsenden Erdballs. <http://www.wachsende-erde.de/web-content/bilder/strut/massenextinktionen5.pdf>
- Strutinski, C. (2017). An alternative view on subduction zones. Powerpoint presentation at the 2nd International Physics Conference, Brussels, 28-30 August 2017. *J. Phys. Chem. Biophys.* 7/3 (Abstract), 64. Doi: 10.4172/2161-0398-C1-023.
- Strutinski, C. (2018a). Fragmentation of the northeastern paleo-Indian oceanic domain by a creeping lithospheric current : Evidence from the Ontong Java Plateau. *J. Phys. Chem. Biophys.* 8 (Abstract), 74. Doi: 10.4172/2161-0398-C2-031.
- Strutinski, C. (2018b). Plattentektonik passé. Wie Mantelströme und Erdwachstum den indopazifischen Raum gestalten. Eigenverlag, Saarbrücken, 127p.

The Hidden History of Earth Expansion

- Strutinski, C. (2019). Orogene auf einer wachsenden Erde („Vergiss dein Schulwissen – die Erde ist anders“). Powerpoint to the Presentation held in the Heiner Studt Studio, Hamburg, 18.10.2019.
- Strutinski, C. Paica, M. Bucur, I. (1983). The Supragetic Nappe in the Poiana Rusca Massif – an argumentation. *An. Inst. Geol. Geofiz*, LX, 221-229.
- Strutinski, C. Puste, A. (2001). Along-strike shearing instead of orthogonal compression: A different viewpoint on orogeny and regional metamorphism. *Himalayan Geol.* 22/1, 191-198.
- Strutinski, C. Stan, R. Puste, A. (2003). Geotectonic hypotheses at the beginning of the 21st century. In: *Why Expanding Earth? A Book in Honour of Ott Christoph Hilgenberg* (Eds. G. Scalera, K.H. Jacob), INGV, Rome, 259-273.
- Stuart, F.M. Lass-Evans, S. Fitton, J.G. and Ellam, R.M. (2003). High $^3\text{He}/^4\text{He}$ ratios in picritic basalts from Baffin Island and the role of a mixed reservoir in mantle plumes. *Nature*, 424, 57-59.
- Sudiro, P. (2014). The Earth Expansion Theory and its transition from scientific hypothesis to pseudoscientific belief. *History of Geo-and Space Sciences*, No 135-148. Web: <https://www.hist-geo-space-sci.net/5/135/2014/hgss-5-135-2014.pdf>.
- Suess, E. (1889). *Dass Antilitz der Erde*, 2, Pt. 3, Die mere der Erdee, Vienna. 704p.
- Sullivan, W. (1974). *Continents in motion; the new Earth debate*. New York, NY: McGraw-Hill.
- Sylvester, A.G. (1988). Strike-slip faults. *Geol. Soc. Am. Bull.* 100, 1666-1703
- Szpak, S. Mosier-Boss, P. Gordon, F. Dea, J. Miles, M. Khim, J. Forsley, L. (2008). LENR research using co-deposition. In *Proc. the 14th Int. Conf. on Condensed Matter Nuclear Science*, Washington, DC (pp. 766–771).
- Tarling, D.H. Runcorn, S.K. (1973). *Implications of Continental Drift to the Earth Sciences*. (NATO Advanced Study Institutes) Symposium, University of Newcastle, England April 1974. Academic Press. Volume 2, 1184 pp.
- Tchalenko, J.S. (1970). Similarities between shear zones of different magnitudes. *Geol. Soc. Am. Bull.* 81, 1626-1640.
- Tchudinov, J.W. (1998) *Global Eduction Tectonics of the Expanding Earth*. VSP. Utrecht, the Netherlands.
- Tebbe, J. (1980). Print and American culture. *American Quarterly*, 32(3), 259–279.

References

- Tharp, M., Frankel, H. (1986). Mappers of the deep. Natural history. New York NY, 95(010), 48-48.
- Thompson, D.W. (1917/1966). On Growth and Form. Cambridge University Press, xiv + 346 pp.
- Thomson, W. (1854). Thermo-electric currents. Trans. Roy. Soc. Edinburgh, 21, 123-171.
- Turcotte, D.L., Oxburgh, E.R. (1973). Mid-plate Tectonics, Nature 244, 337-339.
- Tuttle, R.J. (2012). The Fourth Source: Effects of Natural Nuclear Reactors. Universal Publishers, 580p.
- Van Andel, T.H. 1984. Plate Tectonics at the threshold of middle age. Geologie en Mijnbouw, 63, 337-341.
- Vanderhaeghe, O., Teyssier, C. (1997). Formation of the Shuswap metamorphic core complex during late orogenic collapse of the Canadian Cordillera: Role of ductile thinning and partial melting of the mid- to lower crust. Geodinam. Acta, 10/2, 41-58. Doi: 10.1080/09853111.1997.11105292
- Vanderhaeghe, O., Burg, J.P., Teyssier, C. (1999). Exhumation of migmatites in two collapsed orogens: Canadian Cordillera and French Variscides. In: Exhumation Processes: Normal Faulting, Ductile Flow and Erosion (Eds. U.Ring, M.T. Brandon, G.S. Lister, S.D. Willett), Geol. Soc. London, Spec. Publ. 154, 181-204.
- Van der Voo, French, A.R. (1974). Apparent polar wandering for the Atlantic-bordering continents: Late Cambrian to Eocene. Earth Science Review. 10, 99-119.
- Van Hinsbergen, D.J. Steinberger, B. Doubrovine, P. V. and Gassoller, R. (2011). Acceleration and deceleration of India-Asia convergence since Cretaceous: Roles of mantle plumes and continental collision. Jour. Geophysics Research, 116, doi: 10.1029/2010JB 008081.
- Van Steenis, C.G.G.J. (1963). Pacific Plant Areas, Vol. 1, Monograph 8, Manila: National Institute of Science and Technology.
- Vauchez, A. Nicolas, A. (1991). Mountain building: strike-parallel motion and mantle anisotropy. Tectonophys. 185, 183-201
- Veevers, J.J., Powell, C. McA. and Johnson, B.D. (1980). Sea-floor constraints on the reconstruction of Gondwanaland. Earth and Planetary Science Letters. 51, 435-444.
- Verhoogen, J. (1980). Energetics of the Earth. National Academy of Sciences, Washington, D.C. 139p.
- Verma, O. and 4 Others. (2016). Historical biogeography of the Late Cretaceous vertebrates of India: Comparison of Geophysical and

The Hidden History of Earth Expansion

- Paleontological data. In: A. Khosla and S. G. Lucas (Eds). Cretaceous Period Biotic Diversity and Biogeography. Bull. New Mexico Museum Natural History and Sciences, 71, 317- 330.
- Vine, F.J., Matthews, D.H. (1963). Magnetic Anomalies over Oceanic Ridges. Nature London 199, 947-949.
- Vogel, K. (1983). Global Models and Earth expansion. In Carey, S.W. The Expanding Earth – A Symposium. Sidney, 1981. University of Tasmania 17-27.
- Vogel, K. (1984). Beiträge zur Frage der Expansion der Erde auf der Grundlage von Globenmodellen. Z. geol. Wiss. 12, 563-573.
- Vogel, K. (1990). The expansion of the Earth - an alternative model to the plate tectonics theory. In: Critical Aspects of the Plate Tectonics Theory; Volume II, Alternative Theories. Theophrastus Publishers, Athens, Greece, 14-34.
- Vogel, K. (2003). Global models of the expanding Earth. In Scalera, G and Jacob, K-H. (Editors) 2003. Why Expanding Earth? A book in honour of Ott Christoph Hilgenberg. INGV publisher Roma, 351-356.
- Vogel, K. (2012). Contribution to the Question of Earth Expansion Based on Global Models. In: The Earth Expansion Evidence, A challenge for geology, geophysics and astronomy. “Selected Contributions to the Interdisciplinary Workshop,” (held in Erice, Sicily, Italy 4-9 October. 2011). Post-conference publication edited by Giacarlo Scalera (editor in chief), Enzo Boschi, and Stefan Cwojdzinski. 161-172. Rome.
- Wallin, E.T. Noto, R.C. Gehrels, G.E. (2000). Provenance of the Antelope Mountain quartzite, Yreka Terrane, California: Evidence for large-scale late Paleozoic sinistral displacement along the North American Cordilleran margin and implications for the mid-Paleozoic fringing-arc model. Geol. Soc. Am. Bull. Spec. Paper 347, 119-131. Doi: 10.1130/0-8137-2347-7.119.
- Walther, H.J., von Gehlen, K., Haditsch, G., Maus, H.J. (1999). Lagerstättenkundliches Wörterbuch. GDMB, Clausthal, 688 pp.
- Wang C. Jin A. (2006). Mechanism of the Mafic Dyke Swarms Emplacement in the Eastern Block of the North China Craton. In: Hou G. and Li J. (eds.) Precambrian Geology of the North China Craton. Journal of the Virtual Explorer, Electronic Edition, ISSN 1441-8142, vol. 24, paper 3, doi:10.3809/jvirtex.2006.00161.
- Wegener, A. (1912). Die Entstehung der Kontinente und Ozeane. Geologische Rundschau 3, 276-292.

References

- Wegener, A. (1912). *The Origins of continents and oceans*. (Dover Earth Science: 1915). Originally presented at A Yearly Meeting of the German Geological Society (6 January, 1912).
- Wegener, A. (1915). *Die Entstehung der Kontinente und Ozeane* (The Origin of Continents and Oceans). *Sammlung Vieweg Nr. 23*, Braunschweig, 94p.
- Wegener, A. (1924). *The Origin of Continents and Oceans*. (trans. 3rd ed.). Methuen, London; Dutton & Co. New York, pp.212.
- Wegener, A. (1966). *The origin of continents and oceans* (trans. 4rd ed.). Dover Publications, New York.
- Welsh, W.E. Doyle, L.R. (2013). World with two stars. *Scientific American* 309 (5): 4. (Nov. 2013). 40-47. DOI: 10.1038/scientificamerican.1113-40.
- Wenbin S, and Sung-Ho, N. (2017). Atmospheric acceleration and Earth expansion deceleration of the Earth rotation. *Geodesy and Geodynamics*. 8, 421-426.
- Wertenbaker, W. (1974). *The Floor Of The Sea: Maurice Ewing and the Search to Understand the Earth*. ISBN: 978-0316931212.
- Wilhelm Reich Infant Trust.
<https://www.wilhelmreichtrust.org/biography.html>.
- Winchester, S. (2001). *The map that changed the world*. Viking, pp.338.
- Wingate, M.T.D., Pisarevsky, S.A., Evans, D.A.D. (2002). Rodinia connections between Australia and Laurentia: no SWEAT, no AUSWUS?, *Terra Nova* 14, No. 2, 121-128.
- Wood, J.A. (1968). *Meteorites and the origin of planets*. New York: The McGraw Hill Companies, 117.
- Wood, R.M. (1979). Is the Earth getting bigger! Some geologists believe that our world is expanding. *New Scientist* 8 February 1979. p 387-388.
- Wood, R.M. (1985). *Dark Side of the Earth*. Harper Collins Publishers.
- Wright, L.A. Troxel, B.W. (1969). Chaos structure and Basin and Range normal faults: Evidence for a genetic relationship. *Geol. Soc. Am. Abstracts with Programs*, 1/7, 242.
- Wright, L.A. Troxel, B.W. (1973). Shallow fault interpretation of Basin and Range structure, southwestern Great Basin. In: *Gravity and Tectonics* (Eds. K.A. de Jong, R. Scholten), Wiley, New York, 397-407.
- Xiao W., Songlian A O., Yang L, Chunming H Bo W, Zhang J E, Zhang, Z Y, Rui L, Zhan Yu C and Soong S H (2017) Anatomy of composition and nature of plate convergence: Insights for alternative thoughts for terminal India-Eurasia collision. *China Earth Sciences*, 60, 1015-1039.

The Hidden History of Earth Expansion

- Yano, T. Vasiliev, B.I. Choi, D.R. et al. (2011). Continental rocks in Indian Ocean. NCGT Newsletter 58, (Australia NGCT.org, 2011). 09-28.
- Yuecheng, C. et al. (1998). A new interpretation of the Himalayan orogenic belt. Chinese Science Bulletin, 43.1, 83-84. DOI: 10.1007/BF02885523.
- Young, C. J. Lay, T. (1987). The core-mantle boundary. Earth Planet Science Annual Review, 15, (1987).25-46.
- Young, T.E. (2010). Cloudy with a chance of stars. Scientific American V. 302. 34-41.DOI:10.1038/scientific American 0210-34.
- Zagorevski, A. et al. (2008). Tectonic architecture of an arc-arc collision zone, Newfoundland Appalachians. Annals of Geophysics, Supplement to V.49, No. 1. Special Paper #436 in Draut A. Clift, P.D. and D.W. Scholl (Eds.). Formation and application of the sedimentary record in arc collision zones. (Boulder, CO: Geographical Society of America, Inc. Special Paper #346,). 309-334.
- Zheng, H. Powell, C.M. Zhou, Z.A.J. Dong, G. (2000). Pliocene uplift of the northern Tibet Plateau. Geology, 28, 715-718.
- Zolensky, M.E. et al. (2006). Mineralogy and petrology of Comet 81 P/Wild 2 Nucleus Samples. In Science, V. 314, No. 5806. (Stanford, CA: Highwire Press, 2006).1735-1739.